

A collection of fabric swatches in various colors and textures, including a vibrant orange, a light blue, and a grey woven fabric. A yellow measuring tape is placed diagonally across the bottom of the image, showing measurements in centimeters and inches. The background is a dark, solid color.

Fabrics / Tapicerías

# Andreu World Leather

## Leather Piel / Grade L1

Composition / Composición  
First categorie cow leather  
Piel de vaca de 1ª categoría

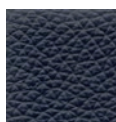
Certifications / Certificados  
UNI EN ISO 1021 - 2 • NFPA 260/  
UFAC • FS Method 5903 • IMO  
Resolution A.653 (16)California TB  
117 section E



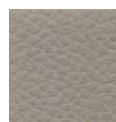
4210



4025



4029



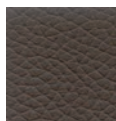
4034



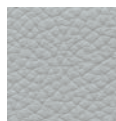
4075



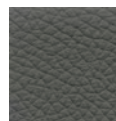
4084



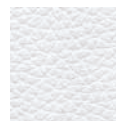
4085



4224



4225



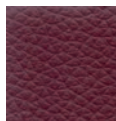
4226



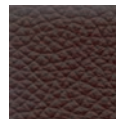
4228



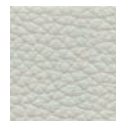
4230



4231



4232



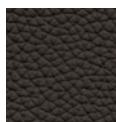
4236



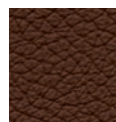
4237



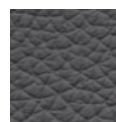
4820



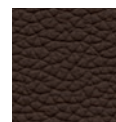
4821



4822



4824



4825

## Hide Leather Cuero / Grade L2

Composition / Composición  
Chrome tanned split leather.  
Base in polyurethane resin  
emulsion in water. Cellulose  
nitric varnish.  
Costra cocida al cromo. Base  
de emulsiones de resinas  
poliuretánicas en agua. Barniz  
nitro celulósico.

Certifications / Certificados  
California TB 117/13 Section E  
part 1 • BS 5852/90 Cigarette  
test/Mach Test • UNI 9175 2  
I EMME



4050



4050



4052



4053



4054



4055



4056



4057



4058



4061

# Andreu World Leather

## Leather Piel / Grade L3

Composition / Composición  
Polished full grain leather  
Plena flor pulida

The leathers have passed comprehensive processes of classification and treatment. The naturalness makes the texture appreciated from the marks and irregularities of the leather.  
Las pieles han pasado exhaustivos procesos de clasificación y tratamiento. La naturalidad hace que en su textura se aprecien ciertas marcas e irregularidades propias de la piel.

Certifications / Certificados  
UNI EN 1021 - 1 - UNI EN 1021-2  
● NFPA 260/UFACFS191 Method 5903 ● IMO Resolution A.652 (16)  
California TB 117 section E



1800



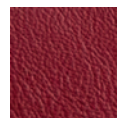
1805



1806



1809



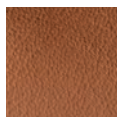
1810



1811



1815



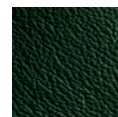
1816



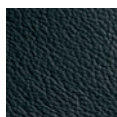
1818



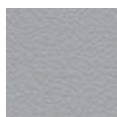
1819



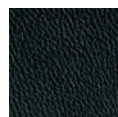
1820



1821



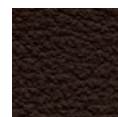
1822



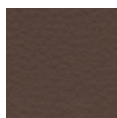
1824



4830



4832



4833



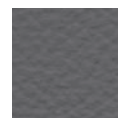
4834



4835



4836



4837

## Tapicerías

# Andreu World Textiles

## Soft-fibra Soft-fiber / Grade 1

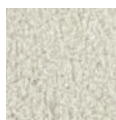
Composition / Composición  
Surface / Superficie 100% Pol.  
Backing / Soporte 67% Pol. 33%  
CO

Martindale test /  
Resistencia a la abrasión  
> 40.000 Cycles / Ciclos (BS  
5690:91)

Certifications / Certificados  
BS 5852 Parts 1-2 • UNE 1021  
Parts 1-2 • NPF 92503 M1-M2



1500



1501



1502



1503



1504



1505



1507



1508



1510



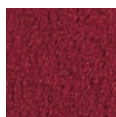
1511



1512



1514



1515



1516

## Jacquard One / Grade 1

Composition / Composición  
48% PP. 33% PES. 19% CO.

Martindale test /  
Resistencia a la abrasión  
> 31.000 Cycles / Ciclos  
(EN ISO 12947-2 min. 20.000)

Certifications / Certificados  
BS5852 0/1 • EN 1021 1/2  
• BS7176 Low hazard CAL  
TB117:sect 1 2013 • NFPA  
260:2013



1721



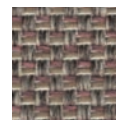
1714



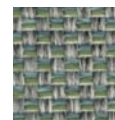
1715



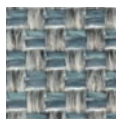
1716



1778



1779



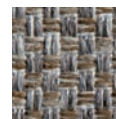
1780



1726



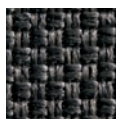
1717



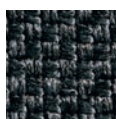
1718



1727



1722



1723

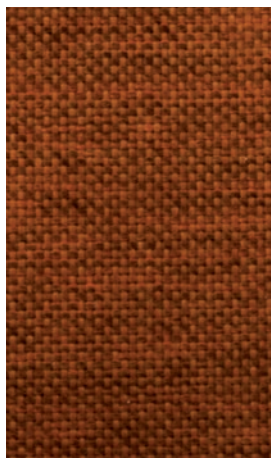
# Andreu World Textiles

## Jacquard Three / Grade 1

Composition / Composición  
50% PP. 31% PE. 19% CO

Martindale test /  
Resistencia a la abrasión  
32.500 Cycles / Ciclos  
(EN ISO 12947-2:1998)

Certifications / Certificados  
BS5852 Source 0 • EN 1021 Part 1  
• NFPA 260 CAL TB-117



1746



1752



1740



1741



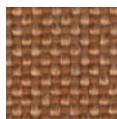
1742



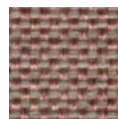
1743



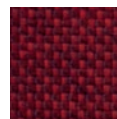
1950



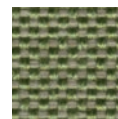
1951



1952



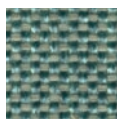
1747



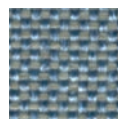
1953



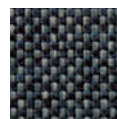
1745



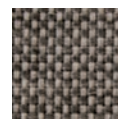
1954



1955



1744



1749



1750



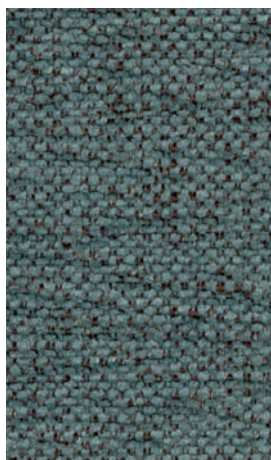
1751

## Jacquard Two / Grade 2

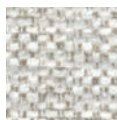
Composition / Composición  
89% PES. 11% CO.

Martindale test /  
Resistencia a la abrasión  
> 60.000 Cycles / Ciclos  
(EN ISO 12947-2 min. 20.000)

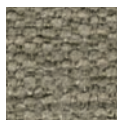
Certifications / Certificados  
BS5852 Source 0 • EN 1021 Part 1  
• NFPA 260 CAL TB-117



1966



1700



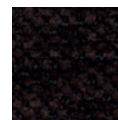
1702



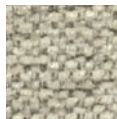
1704



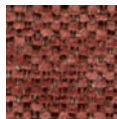
1705



1707



1956



1959



1961



1962



1964



1965



1732



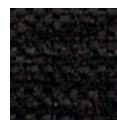
1968



1710



1712



1709



1713

## Tapicerías

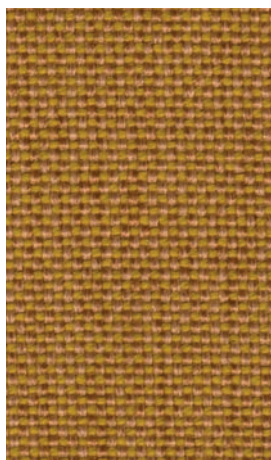
# Andreu World Textiles

## Jacquard Four / Grade 3

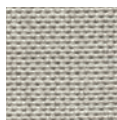
Composition / Composición  
34% WO. 28% PES. 23% PP.  
15%CO

Martindale test /  
Resistencia a la abrasión  
62.000 Cycles / Ciclos  
(EN ISO 12947/2)

Certifications / Certificados  
BS5852 0/1 • EN 1021 1/2  
• BS7176 Low hazard • CAL  
TB117:sect 1 2013 • NFPA  
260:2013



2287



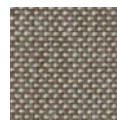
2282



2251



2253



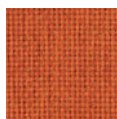
2283



2284



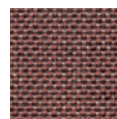
2285



2286



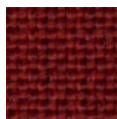
2288



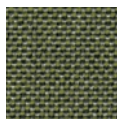
2289



2256



2290



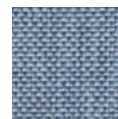
2291



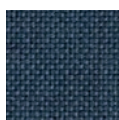
2292



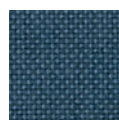
2257



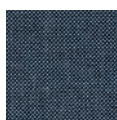
2293



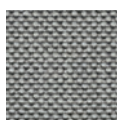
2294



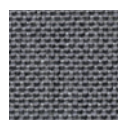
2295



2260



2296



2297



2263



2298

## Jacquard Four / Grade 4

Special for Nuez Collection

Composition / Composición  
34% WO. 28% PES. 23% PP.  
15%CO

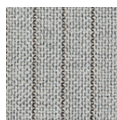
Martindale test /  
Resistencia a la abrasión  
62.000 Cycles / Ciclos  
(EN ISO 12947/2)



2347



2344



2268



2345



2346



2348



2349



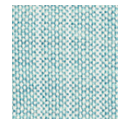
2271



2350



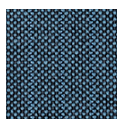
2351



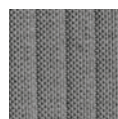
2272



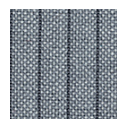
2352



2275



2353



2278



2354

## Andreu World Textiles

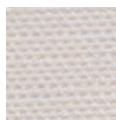
### Sand / Grade 1



1184

Composition / Composición  
 100% Dyed Acrylic Solution  
 100% Acrílico teñido en masa  
 Polypropylene  
 Polipropileno 100% ignífugo

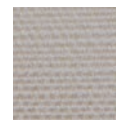
Martindale test /  
 Resistencia a la abrasión  
 17.000 Cycles / Ciclos



1180



1181



1183



1182

## Camira Textiles / Telas Camira

### Citadel / Grade 1

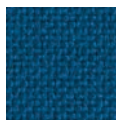


FL825

Composition / Composición  
 100% Flame Retardant  
 Polypropylene  
 Polipropileno 100% ignífugo

Martindale test /  
 Resistencia a la abrasión  
 >30.000 Cycles / Ciclos

Certifications / Certificados  
 BS EN 1021-1 Cigarette ● BS EN 1021 - 2 Match ● BS 7176 Low Hazard ● DIN 4102 B1 ● ÖNORM B 3825 & A3800-1 (58Kg/m<sup>3</sup> CMHR Foam) ● UNI 9175 Classe 1 IM ● EN 13501-1 Adhered Class B, s1, d0 ● EN 13501-1 Un-adhered Class B, s1, d2



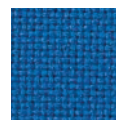
FL010



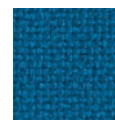
FL019



FL076



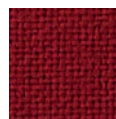
FL125



FL757



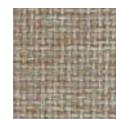
FL768



FL801



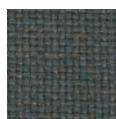
FL821



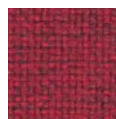
FL822



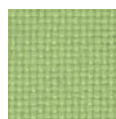
FL823



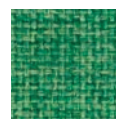
FL824



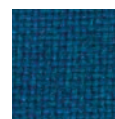
FL826



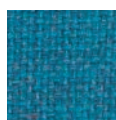
FL827



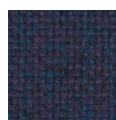
FL828



FL829



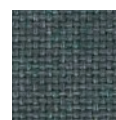
FL830



FL831



FL832



FL833

## Tapicerías

# Camira Textiles / Telas Camira

Era / Grade 1

Composition / Composición  
100% Polyester  
100% Poliéster

Martindale test /  
Resistencia a la abrasión  
>100.000 Cycles / Ciclos

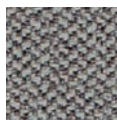
Certifications / Certificados  
EN 1021-1 Cigarette • EN 1021 - 2  
Match • BS 7176 Low Hazard • EN  
13501-1 Adhered Class B, s1, d0  
• EN 13501-1 Un-adhered Class  
C, s1, d0



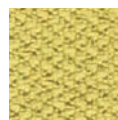
CSE17



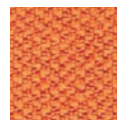
CSE01



CSE02



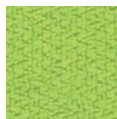
CSE03



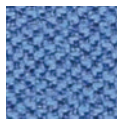
CSE05



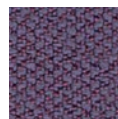
CSE06



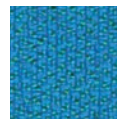
CSE07



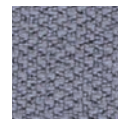
CSE08



CSE09



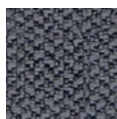
CSE10



CSE11



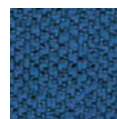
CSE12



CSE13



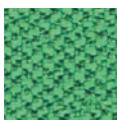
CSE14



CSE15



CSE16



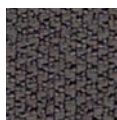
CSE18



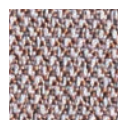
CSE19



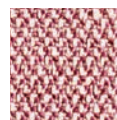
CSE20



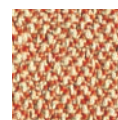
CSE21



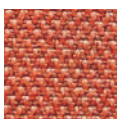
CSE23



CSE24



CSE25



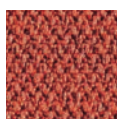
CSE26



CSE27



CSE28



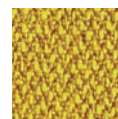
CSE29



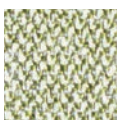
CSE30



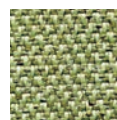
CSE31



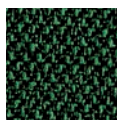
CSE32



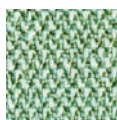
CSE33



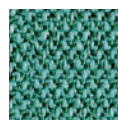
CSE34



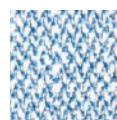
CSE35



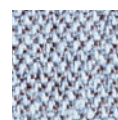
CSE36



CSE37



CSE38



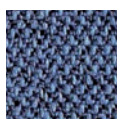
CSE39



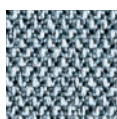
CSE40



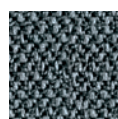
CSE41



CSE42



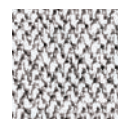
CSE43



CSE44



CSE45



CSE46



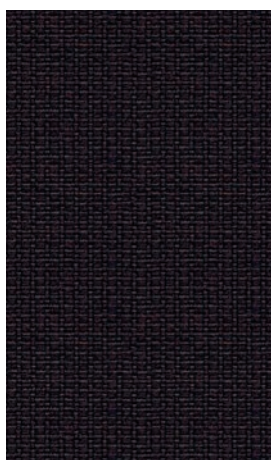
# Camira Textiles / Telas Camira

Gravity / Grade 1

Composition / Composición  
100% Polyester  
100% Poliéster

Martindale test /  
Resistencia a la abrasión  
>80.000 Cycles / Ciclos

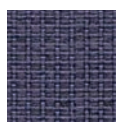
Certifications / Certificados  
EN 1021-1 Cigarette • EN 1021 - 2  
Match • BS 7176 Low Hazard



CPC24



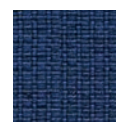
CPC01



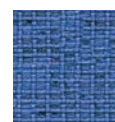
CPC02



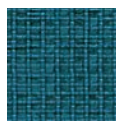
CPC03



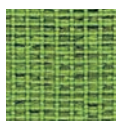
CPC04



CPC05



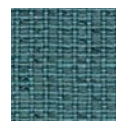
CPC06



CPC07



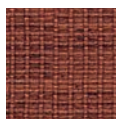
CPC08



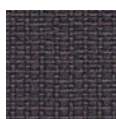
CPC09



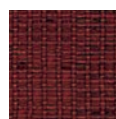
CPC10



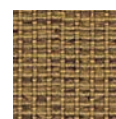
CPC11



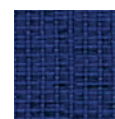
CPC12



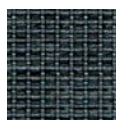
CPC13



CPC14



CPC15



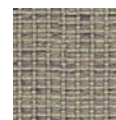
CPC16



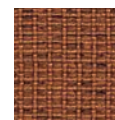
CPC17



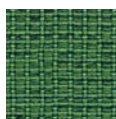
CPC20



CPC21



CPC22



CPC23



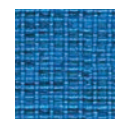
CPC25



CPC26



CPC27



CPC28



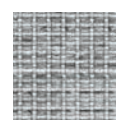
CPC29



CPC30



CPC31



CPC32

# Camira Textiles / Telas Camira

Rivet / Grade 1

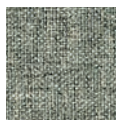
Composition / Composición  
 100% REPREVE Recycled  
 Polyester  
 100% REPREVE Poliéster  
 reciclado

Martindale test /  
 Resistencia a la abrasión  
 >80.000 Cycles / Ciclos

Certifications / Certificados  
 EN 1021-1 Cigarette ● EN 1021 - 2  
 Match ● BS 7176 Low Hazard ●  
 UNI 9175 Classe 1 IM



EGL48



EGL01



EGL03



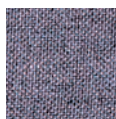
EGL04



EGL05



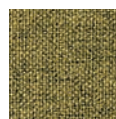
EGL07



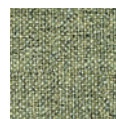
EGL08



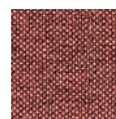
EGL09



EGL10



EGL11



EGL12



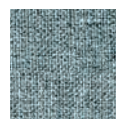
EGL13



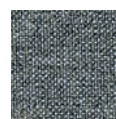
EGL14



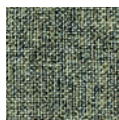
EGL15



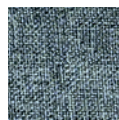
EGL16



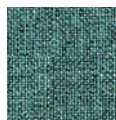
EGL18



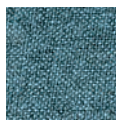
EGL19



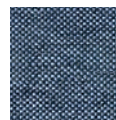
EGL20



EGL21



EGL23



EGL24



EGL25



EGL26



EGL27



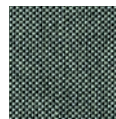
EGL31



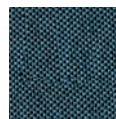
EGL32



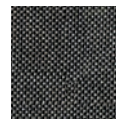
EGL33



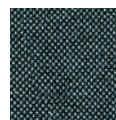
EGL34



EGL35



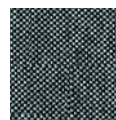
EGL36



EGL37



EGL49



EGL50

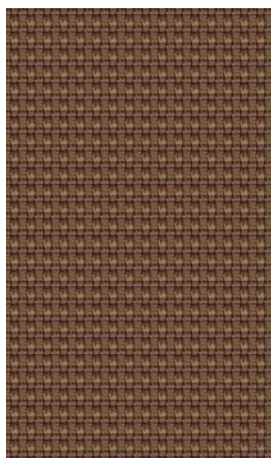
# Camira Textiles / Telas Camira

## Urban / Grade 1

Composition / Composición  
 100% Recycled Flame Retardant  
 Polyester. Non metallic dyestuffs  
 100% poliéster ignífugo reciclado.  
 Colorantes no metálicos.

Martindale test /  
 Resistencia a la abrasión  
 >100.000 Cycles / Ciclos

Certifications /Certificados  
 EN 1021-1 Cigarette ● EN 1021 - 2  
 Match ● BS 5852 Ignition Source 5  
 ● NF D 60-013 ● ÖNORM A 3800-1



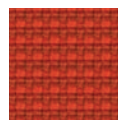
YN091



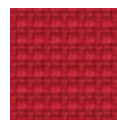
YN009



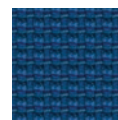
YN027



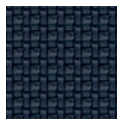
YN076



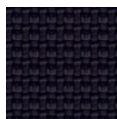
YN079



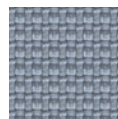
YN082



YN083



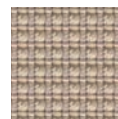
YN086



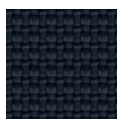
YN094



YN097



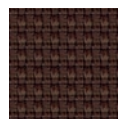
YN108



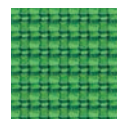
YN145



YN148



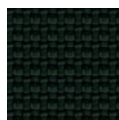
YN158



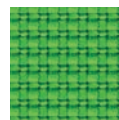
YN159



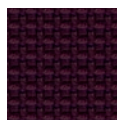
YN160



YN190



YN200



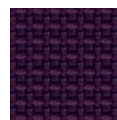
YN201



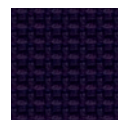
YN202



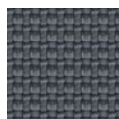
YN203



YN204



YN205



YN206



YN207



YN208



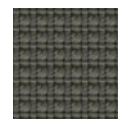
YN209



YN210



YN211



YN212

## Tapicerías

# Camira Textiles / Telas Camira

## Main Line Flax / Grade 3

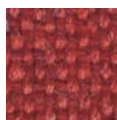
Composition / Composición  
 70% Virgin Wool, 30% Flax  
 70% Lana Virge 30% Lino

Martindale test /  
 Resistencia a la abrasión  
 >50.000 Cycles / Ciclos

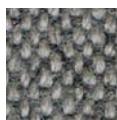
Certifications / Certificados  
 EN 1021-1 Cigarette • EN 1021 - 2  
 Match • BS 5852 Ignition Source 5  
 • NF D 60-013



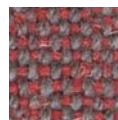
MLF14



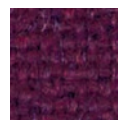
MLF01



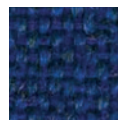
MLF02



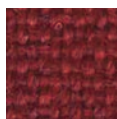
MLF03



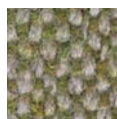
MLF04



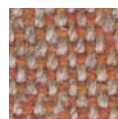
MLF05



MLF06



MLF07



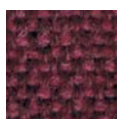
MLF08



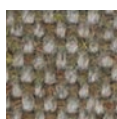
MLF09



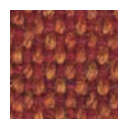
MLF10



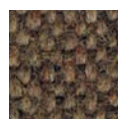
MLF11



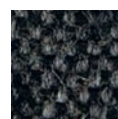
MLF12



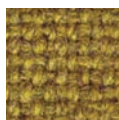
MLF13



MLF15



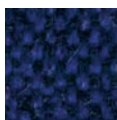
MLF16



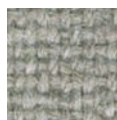
MLF17



MLF18



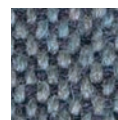
MLF19



MLF20



MLF21



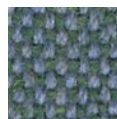
MLF22



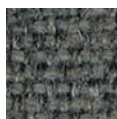
MLF23



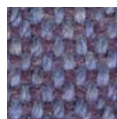
MLF24



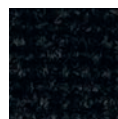
MLF25



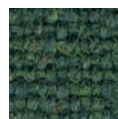
MLF26



MLF27



MLF28



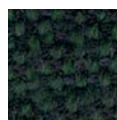
MLF29



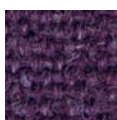
MLF30



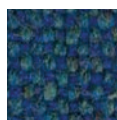
MLF31



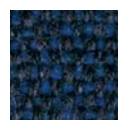
MLF32



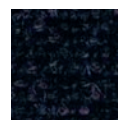
MLF33



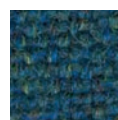
MLF34



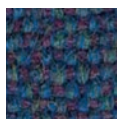
MLF35



MLF36



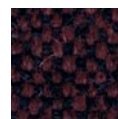
MLF37



MLF38



MLF39



MLF40



MLF41

## Camira Textiles / Telas Camira

### Hemp / Grade 4

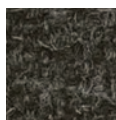
Composition / Composición  
60% Virgin Wool, 40% True Hemp.  
Non metallic dyestuffs  
60% lana virgen, 40% cáñamo  
verdadero. Colorantes no metálicos.

Martindale test /  
Resistencia a la abrasión  
250.000 Cycles / Ciclos

Certifications / Certificados  
EN 1021-1 Cigarette ● EN 1021 - 2  
Match ● BS 5852 Ignition Source 5



HWP07



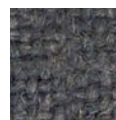
HWP01



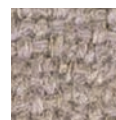
HWP02



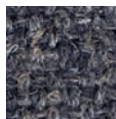
HWP03



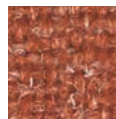
HWP04



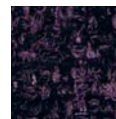
HWP05



HWP06



HWP08



HWP09



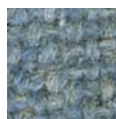
HWP12



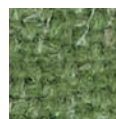
HWP13



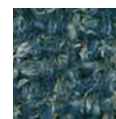
HWP16



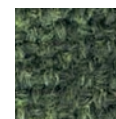
HWP18



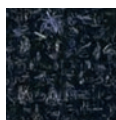
HWP19



HWP20



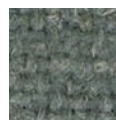
HWP21



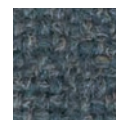
HWP23



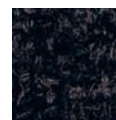
HWP26



HWP27



HWP28



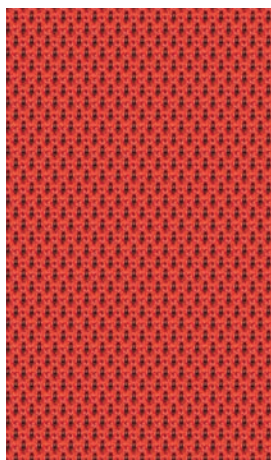
HWP30

### Nexus / Grade 4

Composition / Composición  
100% Polyester. Non metallic  
dyestuffs  
100% poliéster. Colorantes no  
metálicos.

Martindale test /  
Resistencia a la abrasión  
>100.000 Cycles / Ciclos

Certifications / Certificados  
EN 1021-1 Cigarette ● EN 1021 - 2  
Match ● BS 7176 Low Hazard ●  
UNI 9175 Classe 1 IM ● BS 476  
Part 7 Class 1 (Adhered) ● EN  
13501-1 Adhered Class B, s1, d0  
● EN 13501-1 Un-adhered Class  
B, s1, d2



UNY04



UNY01



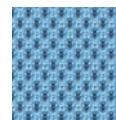
UNY02



UNY03



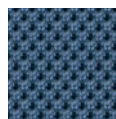
UNY05



UNY06



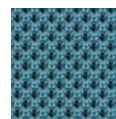
UNY07



UNY08



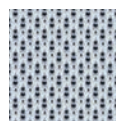
UNY09



UNY10



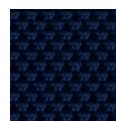
UNY11



UNY12



UNY13



UNY15



UNY16

## Tapicerías

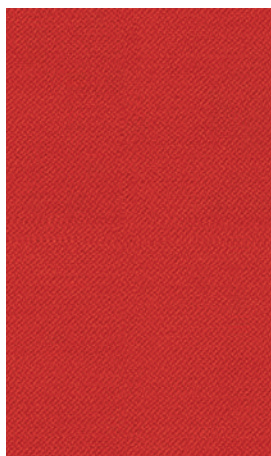
# Camira Textiles / Telas Camira

Oxygen / Grade 4

Composition / Composición  
70% Virgin Wool, 30% Flax  
70% lana virgen, 30% lino

Martindale test /  
Resistencia a la abrasión  
>50.000 Cycles / Ciclos

Certifications / Certificados  
EN 1021-1 Cigarette • EN 1021 - 2  
Match • BS 5852 Ignition Source 5  
• NF D 60-013



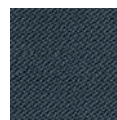
BA030



BA001



BA002



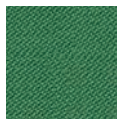
BA004



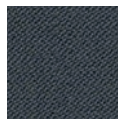
BA005



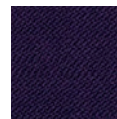
BA007



BA008



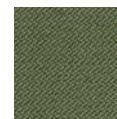
BA010



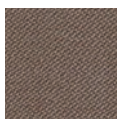
BA011



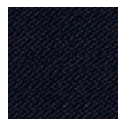
BA012



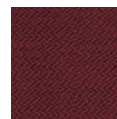
BA013



BA014



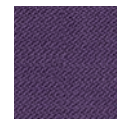
BA015



BA020



BA021



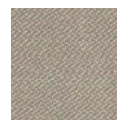
BA023



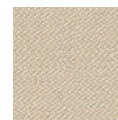
BA034



BA035



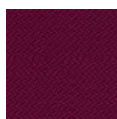
BA039



BA047



BA048



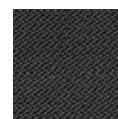
BA049



BA050



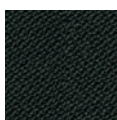
BA051



BA052



BA053



BA054



BA055



BA056



BA057



BA058



BA059

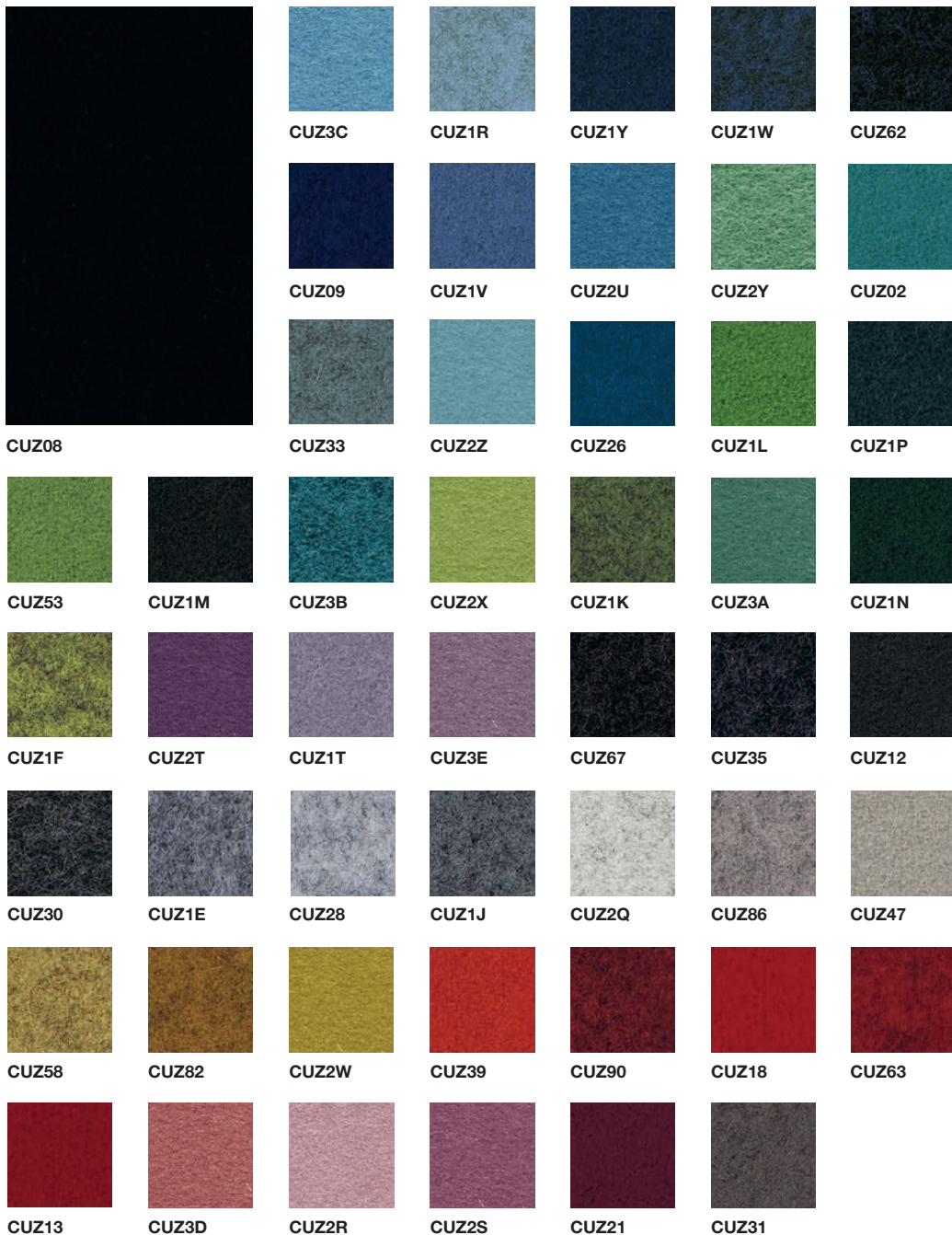
# Camira Textiles / Telas Camira

## Blazer / Grade 5

Composition / Composición  
 100% Virgin Wool. Non metallic  
 dyestuffs  
 Lana 100% virgen. Colorantes no  
 metálicos.

Martindale test /  
 Resistencia a la abrasión  
 >50.000 Cycles / Ciclos

Certifications / Certificados  
 EN 1021 - 1 Cigarette ● EN 1021 -  
 2 Match ● BS 7176 Low Hazard ●  
 NF D 60-013 ● ÖNORM B 3825 &  
 A 3800-1 (58kg/m3CMHR Foam)  
 ● UNI 9175 Classe 1 IM ● BS  
 476 Part 7 Class 1 ● EN 13501-1  
 Adhered Class D, s1, d0 ● BS 5852  
 Ignition Source 5 when FR treated  
 ● BS 7176 Medium Hazard when  
 FR treated ● BS 476 Part 6 Class  
 0 when FR treated ● EN 13501-1  
 Adhered Class B, s1, d0 when FR  
 treated ● EN 13501-1 Un-adhered  
 Class D, s2, d0 when FR treated  
 ● BS 5867-2: Type B Curtains &  
 Drapes when FR treated



## Tapicerías

## Camira Textiles / Telas Camira

### Silk / Grade 5

Composition / Composición  
67% Wool, 22% Flax, 11% Silk.  
Non metallic dyestuffs  
67% lana, 22% lino, 11% seda.  
Colorantes no metálicos.

Martindale test /  
Resistencia a la abrasión  
>50.000 Cycles / Ciclos

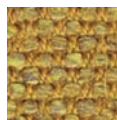
Certifications / Certificados  
EN 1021 - 1 Cigarette ● EN 1021  
- 2 Match ● BS 7176 Low Hazard  
● NF D 60-013 ● BS 5852 Ignition  
Source 5 ● BS 7176 Medium  
Hazard ● UNI 9175 Classe 1 IM  
● BS 5867-2: Type B Curtains &  
Drapes



SLK20



SLK01



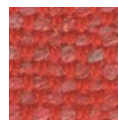
SLK02



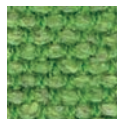
SLK03



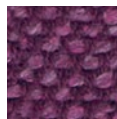
SLK04



SLK05



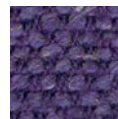
SLK06



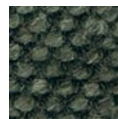
SLK07



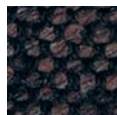
SLK08



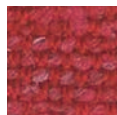
SLK09



SLK10



SLK11



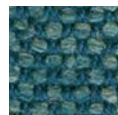
SLK12



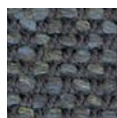
SLK13



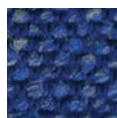
SLK14



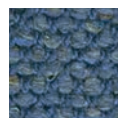
SLK15



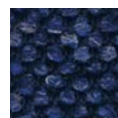
SLK16



SLK17



SLK18



SLK19



SLK21

### Craggan / Grade 6

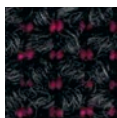
Composition / Composición  
100% Virgin Wool  
100% lana virgen

Martindale test /  
Resistencia a la abrasión  
>50.000 Cycles / Ciclos

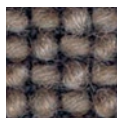
Certifications / Certificados  
EN 1021 - 1 Cigarette ● EN 1021  
- 2 Match ● BS 7176 Low Hazard  
● BS 5852 Ignition Source 5 ● BS  
7176 Medium Hazard ● UNI 9175  
Classe 1 IM



ZAN03



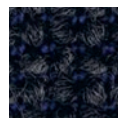
ZAN01



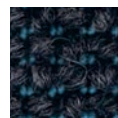
ZAN02



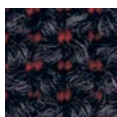
ZAN04



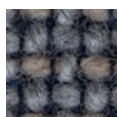
ZAN05



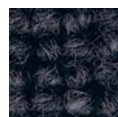
ZAN06



ZAN07



ZAN08



ZAN09



ZAN10



# Camira Textiles / Telas Camira

## Synergy / Grade 5

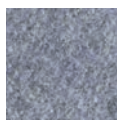
Composition / Composición  
 90% Wool 10% Nylon  
 90% Lana 10% Nylon

Martindale test /  
 Resistencia a la abrasión  
 80.000 Cycles / Ciclos

Certifications / Certificados  
 EN 1021 - 1 Cigarette ● EN 1021 -  
 2 Match ● BS 7176 Low Hazard ●  
 NF D 60-013 ● ÖNORM B 3825 &  
 A 3800-1 (58kg/m3CMHR Foam)  
 ● UNI 9175 Classe 1 IM ● EN  
 13501-1 Adhered Class D, s1, d0 ●  
 EN 13501-1 Un-Adhered Class E,  
 s2, d0 ● BS 5852 Ignition Source  
 5 when FR treated ● BS 7176  
 Medium Hazard when FR treated ●  
 EN 13501-1 Adhered Class B, s1,  
 d0 when FR treated ● EN 13501-1  
 Un-adhered Class D, s2, d0 when  
 FR treated ● BS 5867-2: Type B  
 Curtains & Drapes when FR treated



LDS54



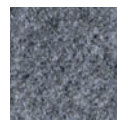
LDS05



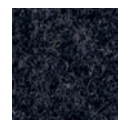
LDS07



LDS08



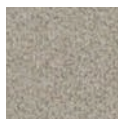
LDS16



LDS17



LDS18



LDS19



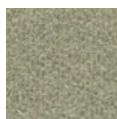
LDS20



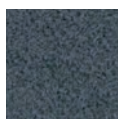
LDS21



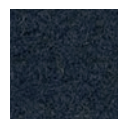
LDS22



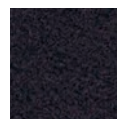
LDS23



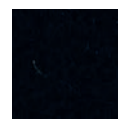
LDS24



LDS25



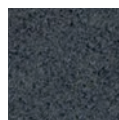
LDS26



LDS27



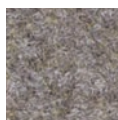
LDS28



LDS29



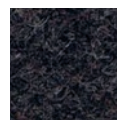
LDS31



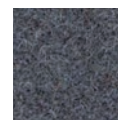
LDS32



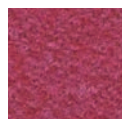
LDS33



LDS34



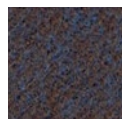
LDS35



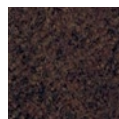
LDS36



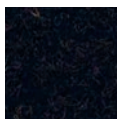
LDS37



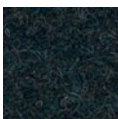
LDS38



LDS39



LDS40



LDS41



LDS42



LDS43



LDS44



LDS45



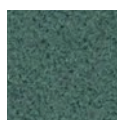
LDS46



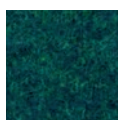
LDS47



LDS48



LDS49



LDS50



LDS51



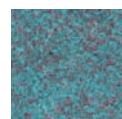
LDS52



LDS53



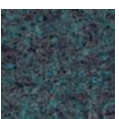
LDS55



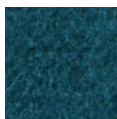
LDS56



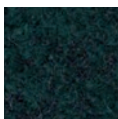
LDS57



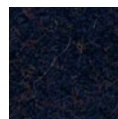
LDS58



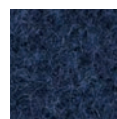
LDS59



LDS60



LDS61



LDS62



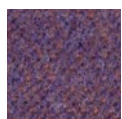
LDS63



LDS64



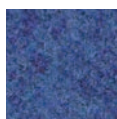
LDS65



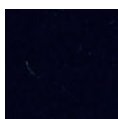
LDS66



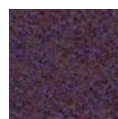
LDS67



LDS68



LDS69



LDS70



LDS71



LDS72



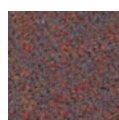
LDS73



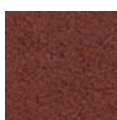
LDS74



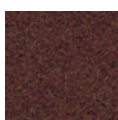
LDS75



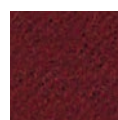
LDS76



LDS77



LDS78



LDS79



LDS80



LDS81



LDS82



LDS83



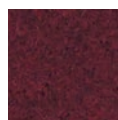
LDS84



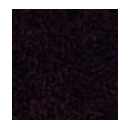
LDS85



LDS86



LDS87



LDS88

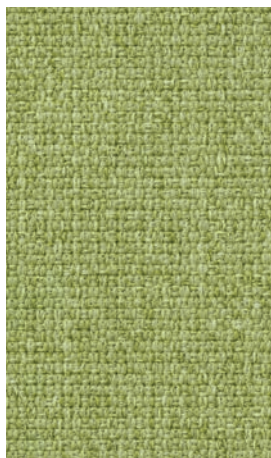
# Gabriel Textiles / Telas Gabriel

## Medley / Grade 3

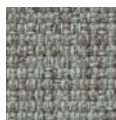
Composition / Composición  
100% Polyester  
100% Poliéster

Martindale test /  
Resistencia a la abrasión  
75.000 Cycles / Ciclos

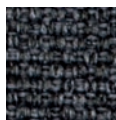
Certifications / Certificados  
BS EN 1021 1&2 Cigarette and  
Match ● BS EN 1021-1 Cigarette  
● BS 5852 Part 1 0,1 Cigarette &  
match ● BS 476 Part 7, class 2 ●  
Class Uno UNI 9174 - UNI 8457 ●  
ÖNORM B 3825-B2-3800-Q1 UK ●  
CA TB 117-2013 ● ASTM E 84



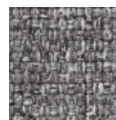
68114



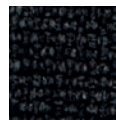
60003



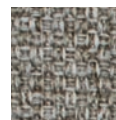
60004



60167



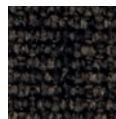
60999



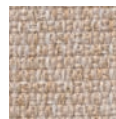
61002



61003



61004



61189



62002



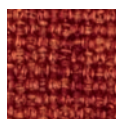
62054



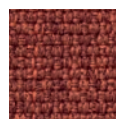
63013



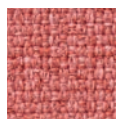
63016



63017



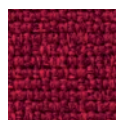
63063



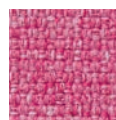
63064



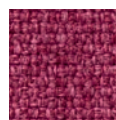
64019



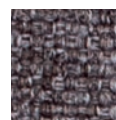
64123



64124



64125



65011



65012



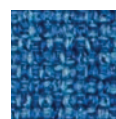
65086



66007



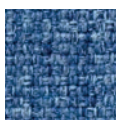
66008



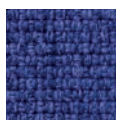
66009



66010



66144



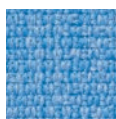
66145



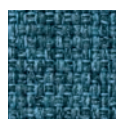
67002



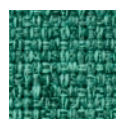
67006



67052



67053



67054



68002



68005



68115

# Gabriel Textiles / Telas Gabriel

Step / Grade 5

Composition / Composición  
100% Trevira CS

Martindale test /  
Resistencia a la abrasión  
100.000 Cycles / Ciclos

Certifications / Certificados  
IMO MSC 307(88) Annex 1 part 8  
● MED Certificate IMO ● DIN 4102  
B1 ● NFP 92-503/504/505 M1 ● BS  
EN 1021 1&2 Cigarette and Match ●  
BS EN 1021-1 Cigarette ● BS 5852  
Part 1 0,1 Cigarette & match ● BS  
5852 Crib 5 ● ÖNORM B 3825-B1-  
3800-Q1 UK ● FAR/JAR 25.853  
(a) (i) (ii) ● BS 7176 Medium hazard  
● AM 18 - NF D 60-013-(only for  
fabric) ● CA TB 117-2013 ● Class  
Uno UNI 9175 Class 1 I EMME ●  
DIN EN 13501-1 B-s1,d0



Tapicerías

# Gabriel Textiles / Telas Gabriel

## Step Melange / Grade 5

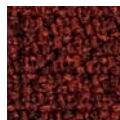
Composition / Composición  
100% Trevira CS

Martindale test /  
Resistencia a la abrasión  
100.000 Cycles / Ciclos

Certifications / Certificados  
IMO MSC 307(88) Annex 1 part 8  
● MED Certificate IMO ● DIN 4102  
B1 ● NFP 92-503/504/505 M1 ●  
BS EN 1021 1&2 Cigarette and  
Match ● BS EN 1021-1 Cigarette  
● BS 5852 Part 1 0,1 Cigarette &  
match ● BS 5852 Crib 5 ● ÖNORM  
B 3825-B1-3800-Q1 UK ● FAR/  
JAR 25.853 (a) (i) (ii) ● BS 7176  
Medium hazard ● AM 18 - NF D  
60-013-(only for fabric) ● CA TB  
117-2013 ● Class Uno UNI 9175  
Class 1 I EMME ● DIN EN 13501-1  
B-s1,d0



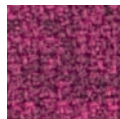
66152



63075



63082



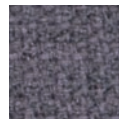
64182



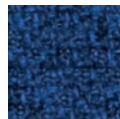
65011



65092



65093



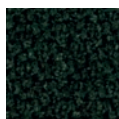
66150



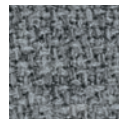
66151



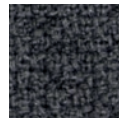
68120



68121



60004



60092



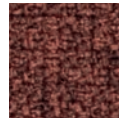
61150



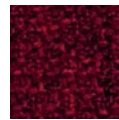
60011



61102



61151



64013



61103



61152



60021



61104



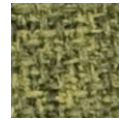
62057



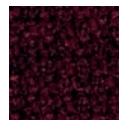
60090



61149



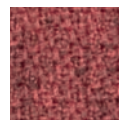
62073



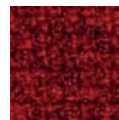
64159



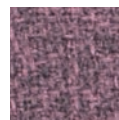
64177



64178



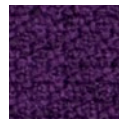
64179



64181



65018



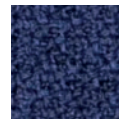
65023



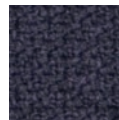
65047



65090



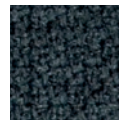
65091



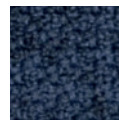
65094



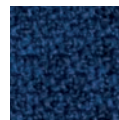
66018



66019



66148



66149



67004



67007



67072



68118



68119



68157



68158



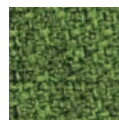
68159



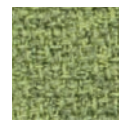
68160



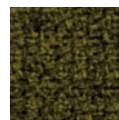
68161



68162



68163



68165

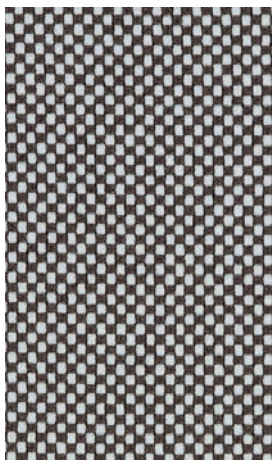
# Gabriel Textiles / Telas Gabriel

## Go check / Grade 6

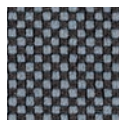
Composition / Composición  
100% Trevira CS

Martindale test /  
Resistencia a la abrasión  
80.000 Cycles / Ciclos

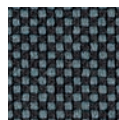
Certifications / Certificados  
BS EN 1021 1&2 Cigarette and  
Match • BS EN 1021-1 Cigarette  
• BS 5852 Part 1 0,1 Cigarette  
& match • BS 5852 Crib 5 • BS  
7176 Medium hazard • DIN 4102  
B1 • NFP 92-503/504/505 M1 •  
ÓNORM B 3825-B1-3800-Q1 UK  
• Class Uno UNI 9175 Class 1 I  
EMME • FAR/JAR 25.853 (a) (i) (ii) •  
CA TB 117-2013 • DIN EN 13501-1  
B-s1,d0



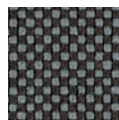
60079



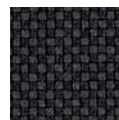
60080



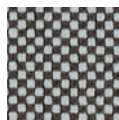
60081



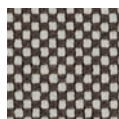
60083



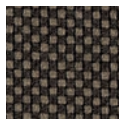
60084



60093



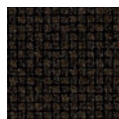
61138



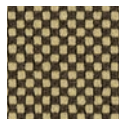
61139



61140



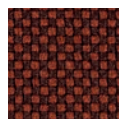
61141



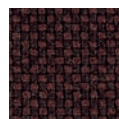
61142



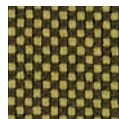
61143



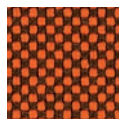
61144



61145



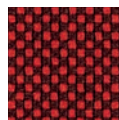
62071



63079



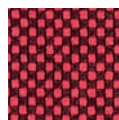
63080



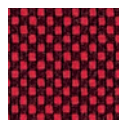
64171



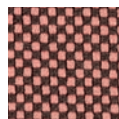
64172



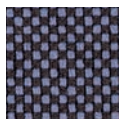
64174



64175



64183



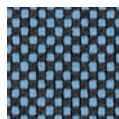
65085



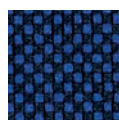
65086



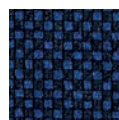
66134



66135



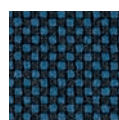
66136



66137



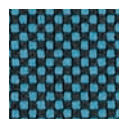
66138



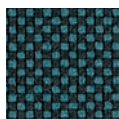
66139



66140



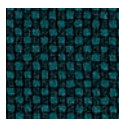
67070



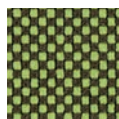
67071



68149



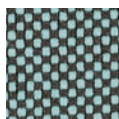
68152



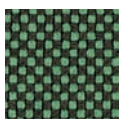
68153



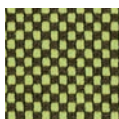
68154



68168



68169



68170

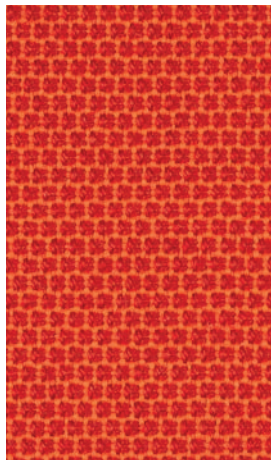
# Gabriel Textiles / Telas Gabriel

## Swing / Grade 6

Composition / Composición  
 54% New Zealand wool / 44%  
 post-consumer recycled polyester /  
 2% polyamide  
 54% lana de Nueva Zelanda / 44%  
 poliéster reciclado postconsumo /  
 2% poliamida

Martindale test /  
 Resistencia a la abrasión  
 100.000 Cycles / Ciclos

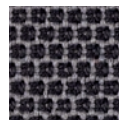
Certifications / Certificados  
 BS EN 1021 1&2 Cigarette and  
 Match • BS EN 1021-1 Cigarette  
 • BS 5852 Part 1 0,1 Cigarette &  
 match • CA TB 117-2013



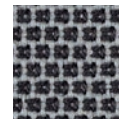
52209



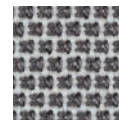
51101



51202



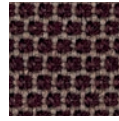
51303



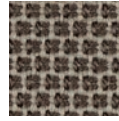
51404



51501



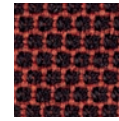
51605



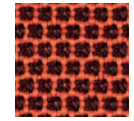
51706



51807



51902



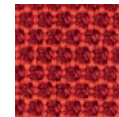
52005



52108



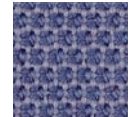
52310



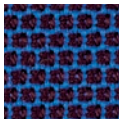
52411



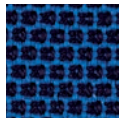
52509



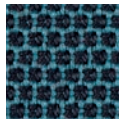
52612



52705



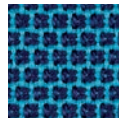
52713



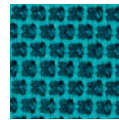
52815



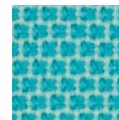
52814



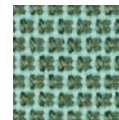
52914



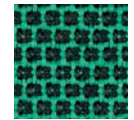
52916



53017



53019



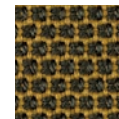
53118



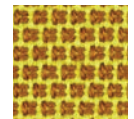
53218



53320



53421



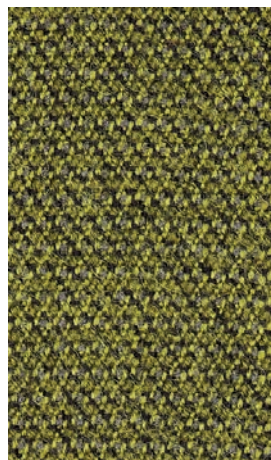
53522

## Capture / Grade 8

Composition / Composición  
 85% New Zealand wool / 15%  
 polyamide  
 85% lana de Nueva Zelanda / 15%  
 poliamida

Martindale test /  
 Resistencia a la abrasión  
 200.000 Cycles / Ciclos

Certifications / Certificados  
 BS EN 1021 1&2 Cigarette and  
 Match • BS 5852 Part 1 0,1  
 Cigarette & match • Class Uno  
 UNI 9175 Class 1 | EMME • CA TB  
 117-2013



5301



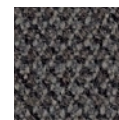
4001



4101



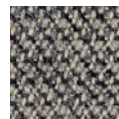
4102



4201



4301



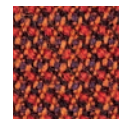
4401



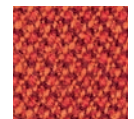
4501



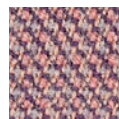
4601



4701



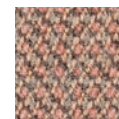
4702



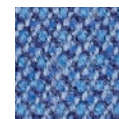
4801



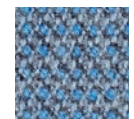
4802



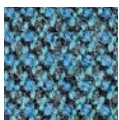
4803



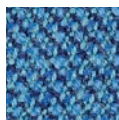
4901



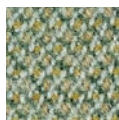
4902



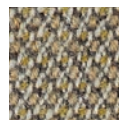
5001



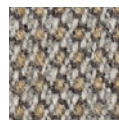
5002



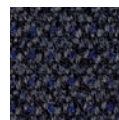
5101



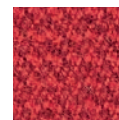
5102



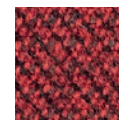
5103



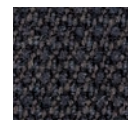
5201



5401



5402



5501

# Kvadrat Textiles / Telas Kvadrat

## Revive 1 / Grade 3

Composition / Composición  
100% Recycled Polyester FR  
100% Poliéster reciclado FR

Martindale test /  
Resistencia a la abrasión  
60.000 Cycles / Ciclos

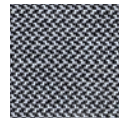
Certifications / Certificados  
DIN 4102 B1 • EN 1021-1/2 • IMO  
FTP Code 2010 Part 8 • UNI 9175  
1IM • US Cal. Bull. 117-2013 •  
ÖNORM B1/ Q1 • NF D 60 013 with  
treatment • SN 198 898 5.3 with  
treatment • AS/NZS 3837, class 1 •  
BS 5852 ignition source 3BS 5852  
Crib 5 with treatment



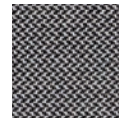
634



144



154



164



184



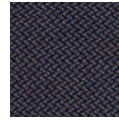
194



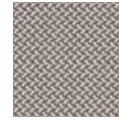
224



274



284



324



384



414



424



434



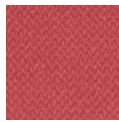
454



524



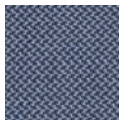
534



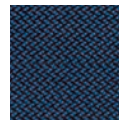
664



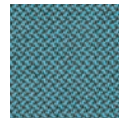
754



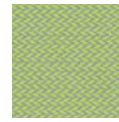
764



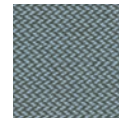
774



834



914



944



974

## Field 2 / Grade 4

Composition / Composición  
100% Trevira

Martindale test /  
Resistencia a la abrasión  
100.000 Cycles / Ciclos

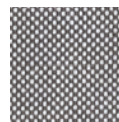
Certifications / Certificados  
BS 5852 Crib 5 • BS 5852 part 1,  
ig. s. 0 • DIN 4102 • B1EN 1021-  
1/2 • FAR 25.853 • IMO FTP Code  
2010 Part 8 • NF D 60 013 • NF P  
92 507 M1 • UNI 9175 1IM • UNI  
9177 Classe 1 • US Cal. Bull. 117-  
2013 • ÖNORM B1/ Q1SN 198  
898 5.2 • AS/NZS 3837, class 1



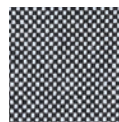
662



123



132



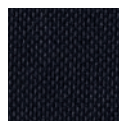
142



173



182



192



222



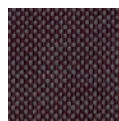
233



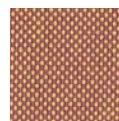
242



343



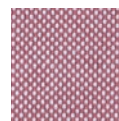
373



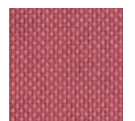
443



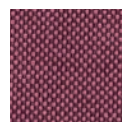
463



623



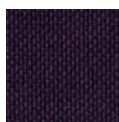
643



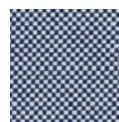
663



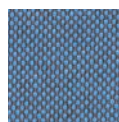
673



693



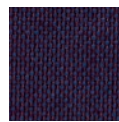
723



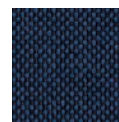
733



763



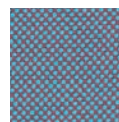
773



782



793



843



933



943



963



983

## Tapicerías

# Kvadrat Textiles / Telas Kvadrat

## Floyd / Grade 4

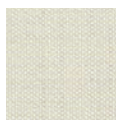
Composition / Composición  
 50% Polyester- 45%New Wool  
 worsted - 5%Nylon  
 50% Poliéster- 45%Nueva lana  
 peinada - 5%Nylon

Martindale test /  
 Resistencia a la abrasión  
 50.000 Cycles / Ciclos

Certifications / Certificados  
 BS 5852 Crib 5 with treatment ●  
 BS 5852 part 1 with treatment ●  
 BS 5852 part 1, ig. s. 0 ● IMO FTP  
 Code 2010 Part 8 ● US Cal. Bull.  
 117-2013 ● EN 1021-1/2 ● AS/NZS  
 3837, class 2



213



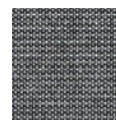
103



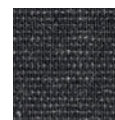
123



143



163



193



223



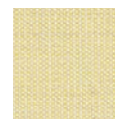
243



263



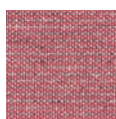
363



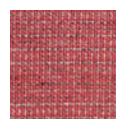
413



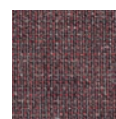
623



643



663



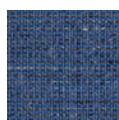
693



723



763



783



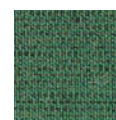
793



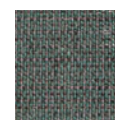
923



943



963



983



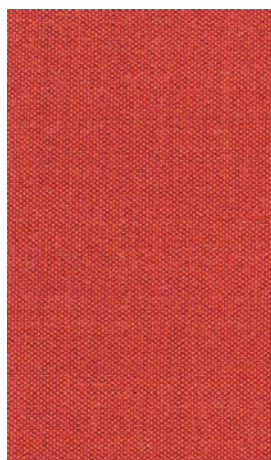
# Kvadrat Textiles / Telas Kvadrat

## Remix 2 / Grade 4

Composition / Composición  
 90% Wool 10% Nylon  
 90% Lana 10% Nylon

Martindale test /  
 Resistencia a la abrasión  
 100.000 Cycles / Ciclos

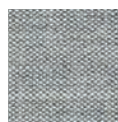
Certifications / Certificados  
 AS/NZS 1530.3 • AS/NZS 3837,  
 class 2 • BS 5852 part 1 • EN  
 1021-1/2 • IMO FTP Code 2010  
 Part 8 • NF D 60 013 • NFPA 260 •  
 UNI 9175 1 • IMUS Cal. Bull. 117-  
 2013 • ÖNORM B1/ Q1 • BS 5852  
 Crib 5 with treatment • IMO FTP  
 Code 2010 Part 7 with • SN 198  
 898 5.3 with treatment • BS 5852  
 ignition source 3



692



113



123



133



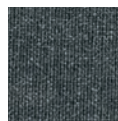
143



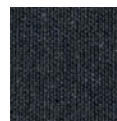
152



163



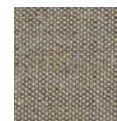
173



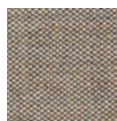
183



223



233



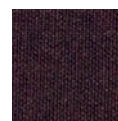
242



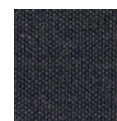
252



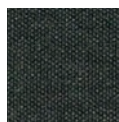
362



373



383



393



412



422



433



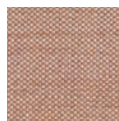
443



452



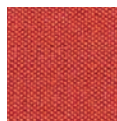
543



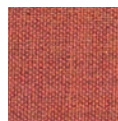
612



632



643



653



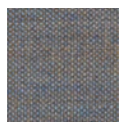
662



672



682



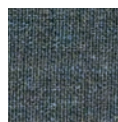
722



733



743



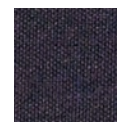
753



762



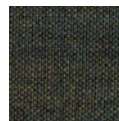
773



783



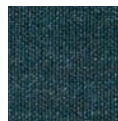
823



842



852



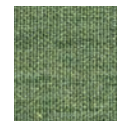
873



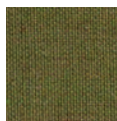
912



923



933



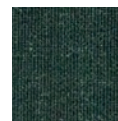
942



954



962



973



982

# Kvadrat Textiles / Telas Kvadrat

## Messenger 5/ Grade 5

Composition / Composición  
 78% Post industrial recycled,  
 15% Polyester, 7% Nylon  
 78% post industrial reciclado,  
 15% Poliéster, 7% Nylon

Martindale test /  
 Resistencia a la abrasión  
 65.000 Cycles / Ciclos

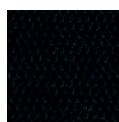
Certifications / Certificados  
 BS 5852 part 1 with treatment ●  
 EN 1021-1/2 with treatment ● US  
 Cal. Bull. 117-2013 ● IMO FTP  
 Code 2010 Part 8 with ● NF D 60  
 013 with treatment ● NFPA 260 ●  
 EN 1021-1BS 5852 Crib 5 with  
 treatment



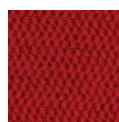
072



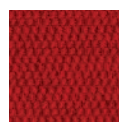
007



008



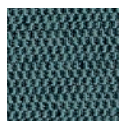
024



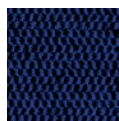
025



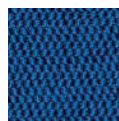
029



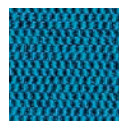
031



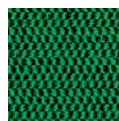
038



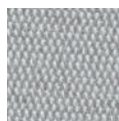
040



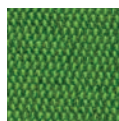
041



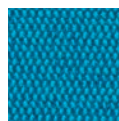
045



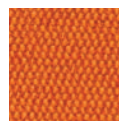
046



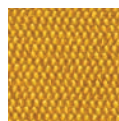
048



050



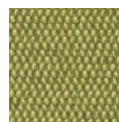
053



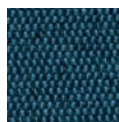
054



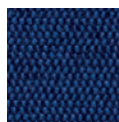
058



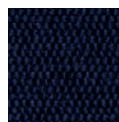
060



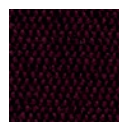
061



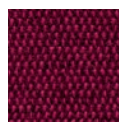
062



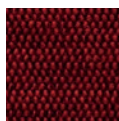
063



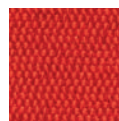
066



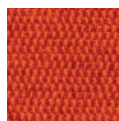
067



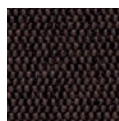
069



070



071



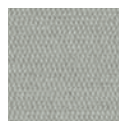
076



077



078



079



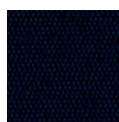
081



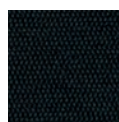
084



085



086



087



089



090



091



092



093



094



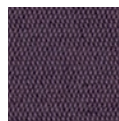
095



096



097



098

## Kvadrat Textiles / Telas Kvadrat

### Ledger / Grade 6

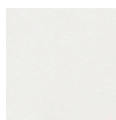
Composition / Composición  
100% Polyurethane  
100% Poliuretano

Martindale test /  
Resistencia a la abrasión  
100.000 Cycles / Ciclos

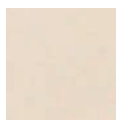
Certifications / Certificados  
EN 1021-1 • EN 1021-1/2 with  
treatment • NFPA 260US Cal. Bull.  
117-2013 • BS 5852 Crib 5 with  
treatment



036



001



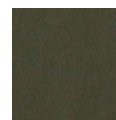
002



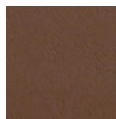
003



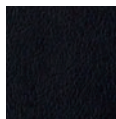
004



017



022



025



026



027



028



029



030



031



032



033



034



035



037



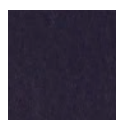
038



039



040



041



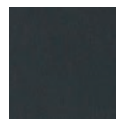
042



043



045



046



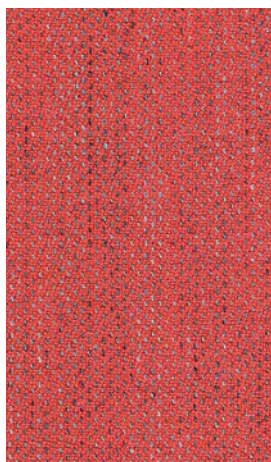
044

### Clara 2 / Grade 6

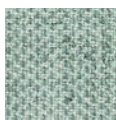
Composition / Composición  
92% New wool (worsted),  
8% Nylon  
92% lana nueva (peinada),  
8% Nylon

Martindale test /  
Resistencia a la abrasión  
80.000 Cycles / Ciclos

Certifications / Certificados  
AS/NZS 3837 • BS 5852 part 1  
• EN 1021-1/2 • IMO FTP Code  
2010 Part 8 • NF D 60 013 • NFPA  
260UNI 9175 1 • IMUS Cal. Bull.  
117-2013 • ÖNORM B1/ Q1 • BS  
5852 Crib 5 with treatment



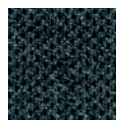
548



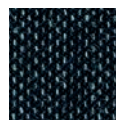
144



148



184



188



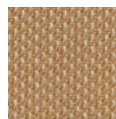
244



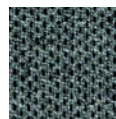
248



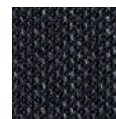
273



277



384



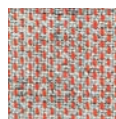
388



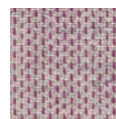
423



427



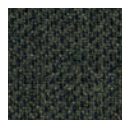
544



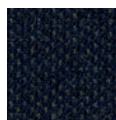
643



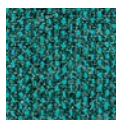
647



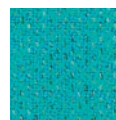
793



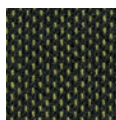
797



884



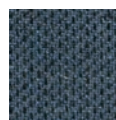
888



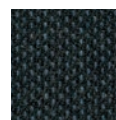
933



937



983



987

## Tapicerías

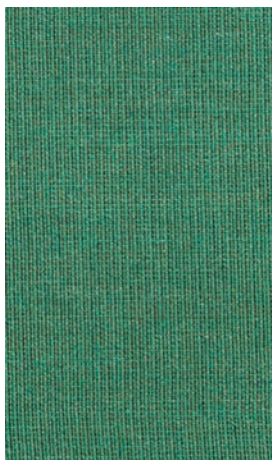
# Kvadrat Textiles / Telas Kvadrat

## Canvas 2/ Grade 7

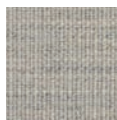
Composition / Composición  
 92% New wool (worsted),  
 8% Nylon  
 92% lana nueva (peinada),  
 8% Nylon

Martindale test /  
 Resistencia a la abrasión  
 100.000 Cycles / Ciclos

Certifications / Certificados  
 AS/NZS 1530.3 • BS 5852 part 1  
 • EN 1021-1/2 • IMO FTP Code  
 2010 Part 8 • NF D 60 013 • NFPA  
 260SN 198 898 5.3 with treatment  
 • UNI 9175 1 • IMUS Cal. Bull. 117-  
 2013 • ÖNORM B1/ Q1 • BS 5852  
 ignition source 3 • BS 5852 Crib 5  
 with treatment



946



114



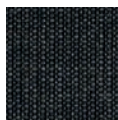
124



134



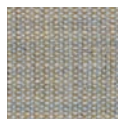
154



174



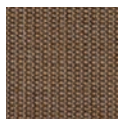
216



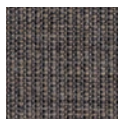
224



244



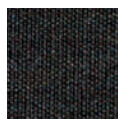
254



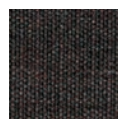
264



356



364



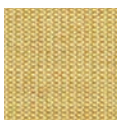
374



414



424



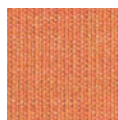
446



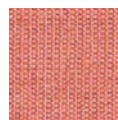
454



546



556



566



576



614



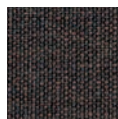
644



654



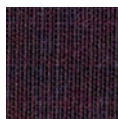
666



674



684



694



716



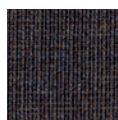
726



734



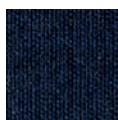
746



764



786



794



836



854



926



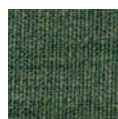
936



954



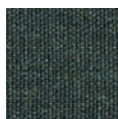
964



974



984



996

## Kvadrat Textiles / Telas Kvadrat

### Rime / Grade 7

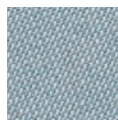
Composition / Composición  
 90% New wool (worsted),  
 10% Nylon  
 90% lana nueva (peinada),  
 10% Nylon

Martindale test /  
 Resistencia a la abrasión  
 100.000 Cycles / Ciclos

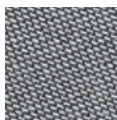
Certifications / Certificados  
 AS/NZS 3837, class 2 • BS 5852  
 part 1 DIN 4102 B2 • EN 1021-1/2  
 • IMO FTP Code 2010 Part 8 • NF  
 D 60 013 • SN 198 898 5.3 with  
 treatment • UNI 9175 1 • IMUS Cal.  
 Bull. 117-2013 • ÖNORM B2/Q1 •  
 BS 5852 Crib 5 with treatment • BS  
 5852 ignition source 3



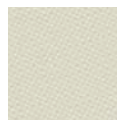
111



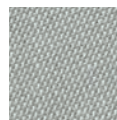
131



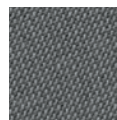
151



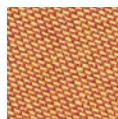
211



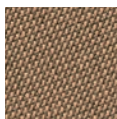
231



271



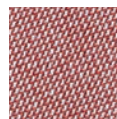
451



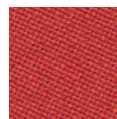
471



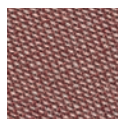
521



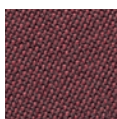
541



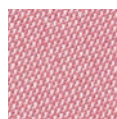
551



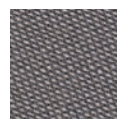
571



591



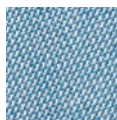
621



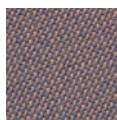
641



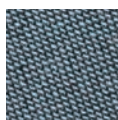
691



721



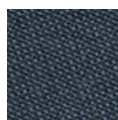
731



741



781



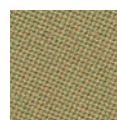
791



911



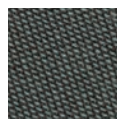
921



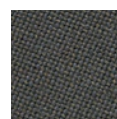
941



951



981



991

### Sudden 2/ Grade 7

Composition / Composición  
 100% Polyurethane  
 100% Poliuretano

Martindale test /  
 Resistencia a la abrasión  
 100.000 Cycles / Ciclos

Certifications / Certificados  
 BS 5852 Crib 5 with treatment •  
 BS 5852 part 1 with treatment •  
 EN 1021-1 • EN 1021-1/2 with  
 treatment NFPA 260



010



002



003



005



006



007



008



009



011



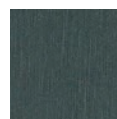
013



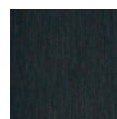
015



016



017



018



019



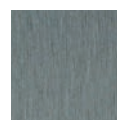
020



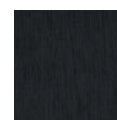
024



027



029



030



036

## Tapicerías

# Kvadrat Textiles / Telas Kvadrat

## Fiord / Grade 8

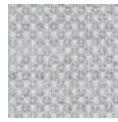
Composition / Composición  
 92% New wool (worsted),  
 8% Nylon  
 92% lana nueva (peinada),  
 8% Nylon

Martindale test /  
 Resistencia a la abrasión  
 60.000 Cycles / Ciclos

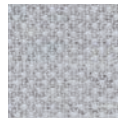
Certifications / Certificados  
 BS 5852 Crib 5 with treatment ●  
 BS 5852 part 1 ● DIN 4102 B2 ● EN  
 1021-1/2 ● IMO FTP Code 2010  
 Part 8 ● NF D 60 013 ● UNI 9175 1  
 ● IMUS Cal. Bull. 117-2013 ● AS/  
 NZS 3837, class 2 ● SN 198 898  
 5.3 with treatment



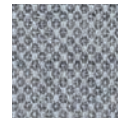
571



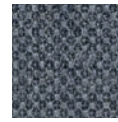
101



121



151



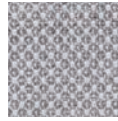
171



191



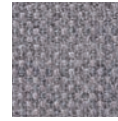
201



251



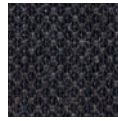
271



351



371



391



451



521



551



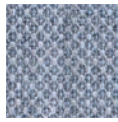
581



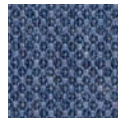
591



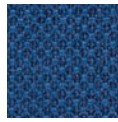
721



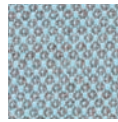
751



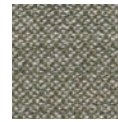
771



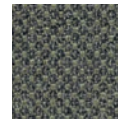
791



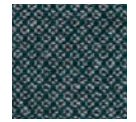
821



951



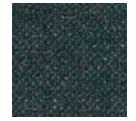
961



971



981



991

## Divina MD/ Grade 9

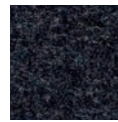
Composition / Composición  
 100% New wool,  
 100% Lana nueva

Martindale test /  
 Resistencia a la abrasión  
 45.000 Cycles / Ciclos

Certifications / Certificados  
 AS/NZS 1530.3 ● BS 5852 Crib  
 5 ● BS 5852 part 1 ● BS 5867  
 part 2 type B ● EN 1021-1/2 ● EN  
 13501, C-s1, d0, glued ● IMO FTP  
 Code 2010 Part 8 ● NF D 60 013 ●  
 NFPA 260 ● SN 198 898 5.3 with  
 treatment ● UNI 9175 1 ● IMUS Cal.  
 Bull. 117-2013 ● ÖNORM B1/ Q1 ●  
 BS 5852 ignition source 3



633



193



203



213



293



343



353



363



413



433



453



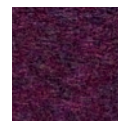
613



653



673



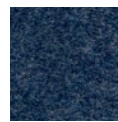
683



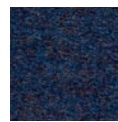
713



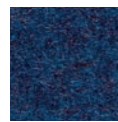
733



743



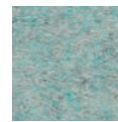
753



773



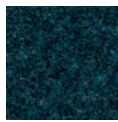
783



813



843



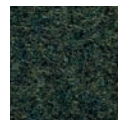
873



913



943



973

Fabrics

# Kvadrat Textiles / Telas Kvadrat

## Tonus 4/ Grade 8

Composition / Composición  
 90% New wool, 10% Helanca  
 90% lana nueva (peinada),  
 10% Nylon

Martindale test /  
 Resistencia a la abrasión  
 100.000 Cycles / Ciclos

Certifications / Certificados  
 BS 5852 part 1 • EN 1021-1/2 •  
 IMO FTP Code 2010 Part 8 • NF D  
 60 013 • NFPA 260SN 198 898 5.3  
 with treatment • UNI 9175 1 • IMUS  
 Cal. Bull. 117-2013 • ÖNORM B1/  
 Q1 • BS 5852 Crib 5 with treatment



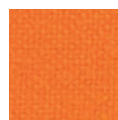
130



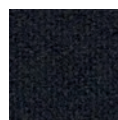
100



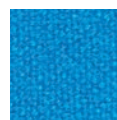
118



125



128



129



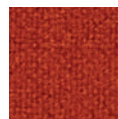
131



132



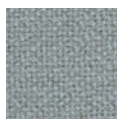
135



207



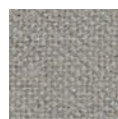
210



216



224



240



244



364



374



394



424



440



454



464



474



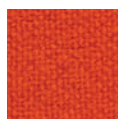
508



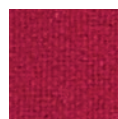
554



605



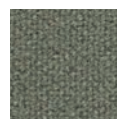
608



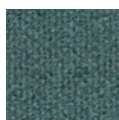
609



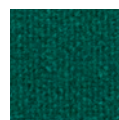
610



613



615



619



631



634



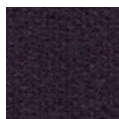
636



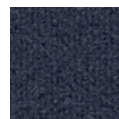
654



664



684



690



754



764



854



914



934



954



964



974

## Tapicerías

# Kvadrat Textiles / Telas Kvadrat

## Divina 3 / Grade 8

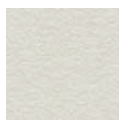
Composition / Composición  
 100% New wool  
 100% Lana nueva

Martindale test /  
 Resistencia a la abrasión  
 45.000 Cycles / Ciclos

Certifications / Certificados  
 AS/NZS 1530.3 ● BS 5852 Crib 5  
 ● BS 5852 part 1 ● BS 5867 part 2  
 type B ● EN 1021-1/2 ● EN 13501,  
 C-s1, d0, glued ● IMO FTP Code  
 2010 Part 8 ● NF D 60 013 ● NFPA  
 260SN 198 898 5.3 with treatment  
 ● UNI 9175 1 ● IMUS Cal. Bull. 117-  
 2013 ● ÖNORM B1/ Q1 ● BS 5852  
 ignition source 3



756



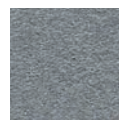
106



154



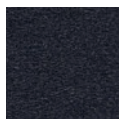
171



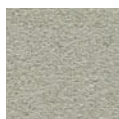
173



181



191



224



236



246



334



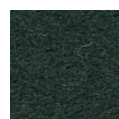
346



356



376



384



393



426



444



462



526



536



542



552



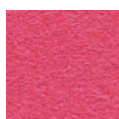
562



584



623



626



636



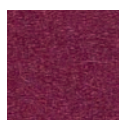
652



662



666



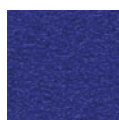
671



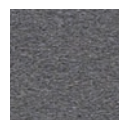
676



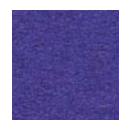
684



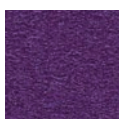
686



691



692



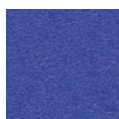
696



712



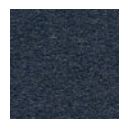
742



782



791



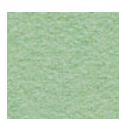
793



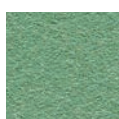
826



836



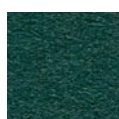
846



856



876



886



893



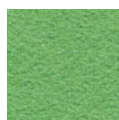
922



936



944



956



966



984



# Kvadrat Textiles / Telas Kvadrat

## Divina Melange 3 / Grade 9

Composition / Composición  
 100% New wool  
 100% Lana nueva

Martindale test /  
 Resistencia a la abrasión  
 45.000 Cycles / Ciclos

Certifications / Certificados  
 AS/NZS 1530.3 ● BS 5852 Crib  
 5BS 5852 part 1 ● BS 5867 part 2  
 type B ● EN 1021-1/2 ● EN 13501,  
 C-s1, d0, glued ● IMO FTP Code  
 2010 Part 8 ● NF D 60 013NFPA  
 260 ● SN 198 898 5.3 with  
 treatment ● UNI 9175 1 ● IMUS Cal.  
 Bull. 117-2013 ● ÖNORM B1/ Q1 ●  
 BS 5852 ignition source 3



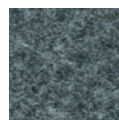
731



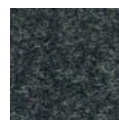
120



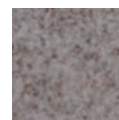
147



170



180



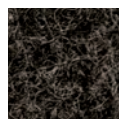
227



237



260



277



280



367



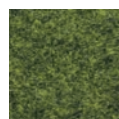
427



457



467



471



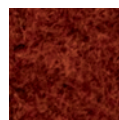
517



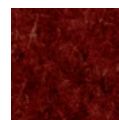
527



547



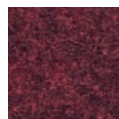
557



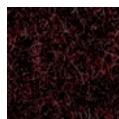
567



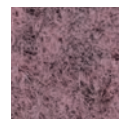
571



581



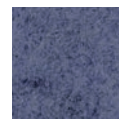
597



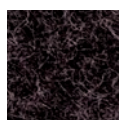
617



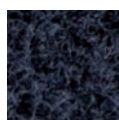
620



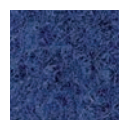
647



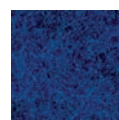
677



687



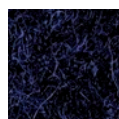
747



757



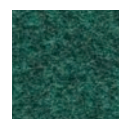
777



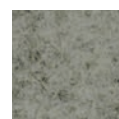
787



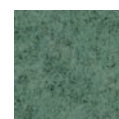
821



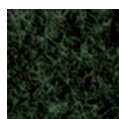
871



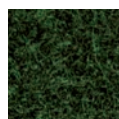
917



937



967



977

# Kvadrat Textiles / Telas Kvadrat

## Hallingdal 65 / Grade 9

Composition / Composición  
 70% New wool, 30% Viscose  
 70% Lana nueva, 30% Viscosa

Martindale test /  
 Resistencia a la abrasión  
 100.000 Cycles / Ciclos

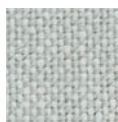
Certifications / Certificados  
 AS/NZS 1530.3 • AS/NZS 3837  
 • BS 5852 Crib 5BS 5852 part 1  
 • EN 1021-1/2 • IMO FTP Code  
 2010 Part 8 • NF D 60 013 • NFPA  
 260SN 198 898 5.3 with treatment  
 • UNI 9175 1 • IMUS Cal. Bull. 117-  
 2013 • ÖNORM B1/ Q1 • BS 5852  
 ignition source 3



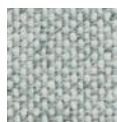
563



100



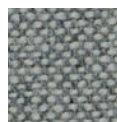
103



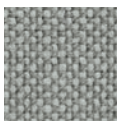
110



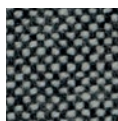
113



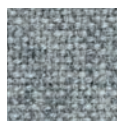
116



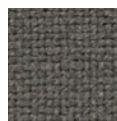
123



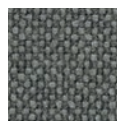
126



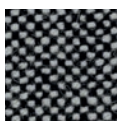
130



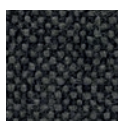
143



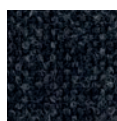
153



166



173



180



190



200



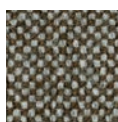
220



224



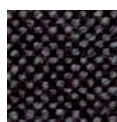
227



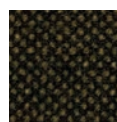
270



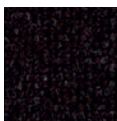
350



368



370



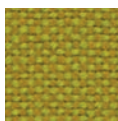
376



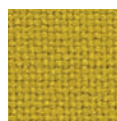
390



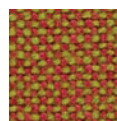
407



420



457



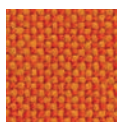
526



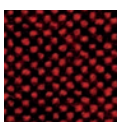
547



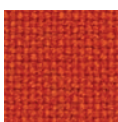
573



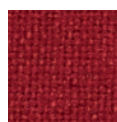
590



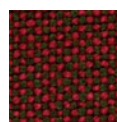
596



600



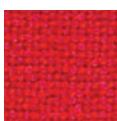
657



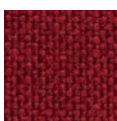
660



674



680



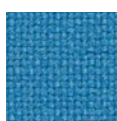
687



694



702



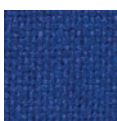
723



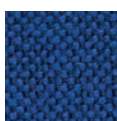
733



750



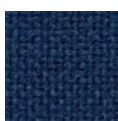
753



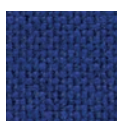
754



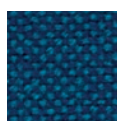
763



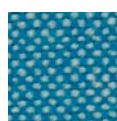
764



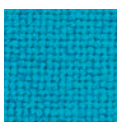
773



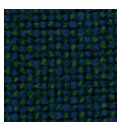
810



840



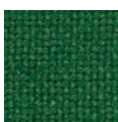
850



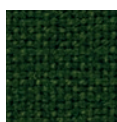
890



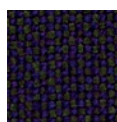
907



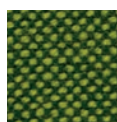
944



960



968



980

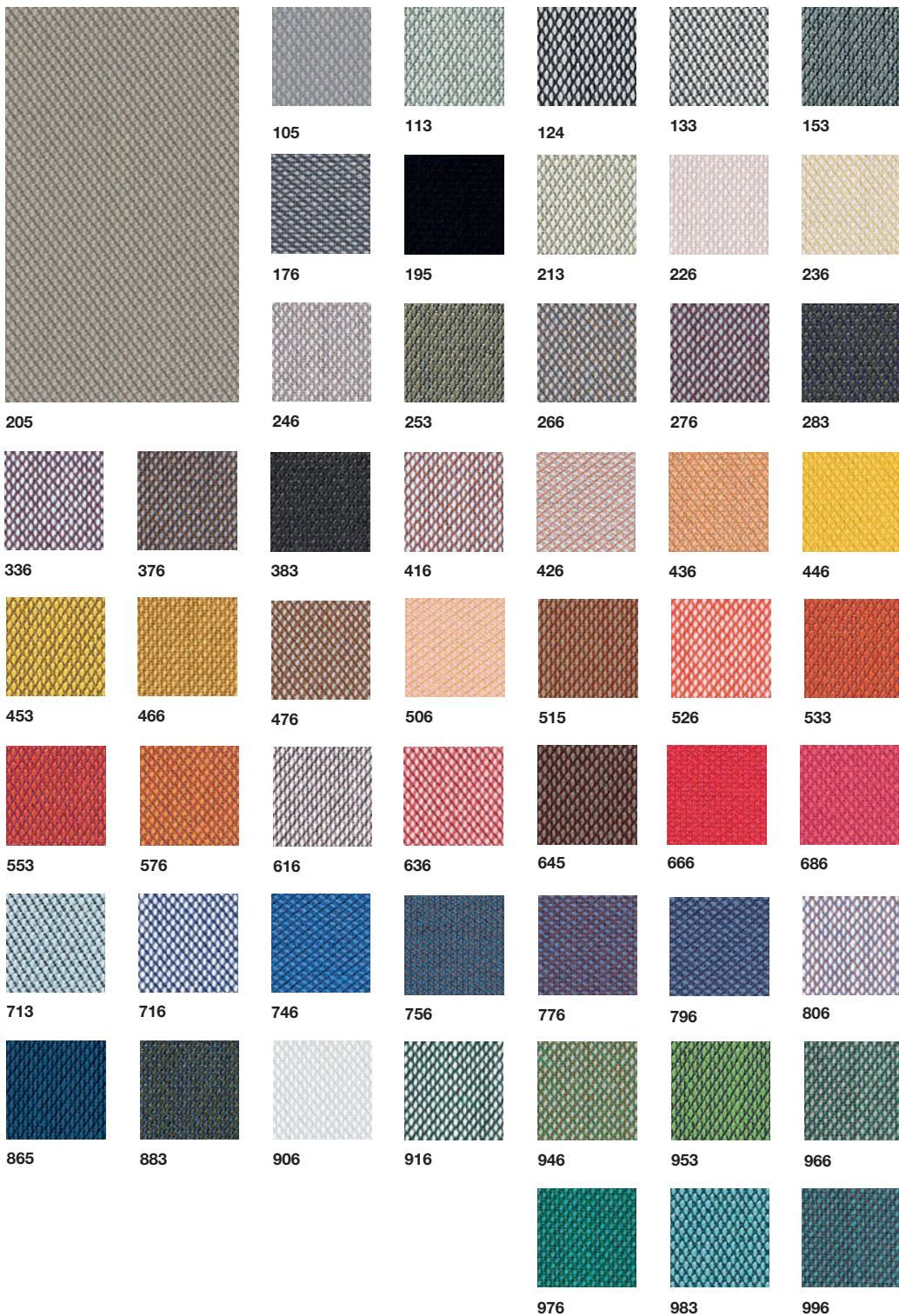
# Kvadrat Textiles / Telas Kvadrat

## Steelcut Trio 3 / Grade 9

Composition / Composición  
 90% New wool (worsted),  
 10% Nylon  
 90% lana nueva (peinada),  
 10% nailon

Martindale test /  
 Resistencia a la abrasión  
 100.000 Cycles / Ciclos

Certifications / Certificados  
 AS/NZS 3837, class 2 • BS 5852  
 part 1EN 1021-1/2 • IMO FTP  
 Code 2010 Part 8 • NF D 60 013 •  
 NFPA 260 • SN 198 898 5.3 with  
 treatment • UNI 9175 1 • IMUS Cal.  
 Bull. 117-2013 • ÖNORM B1/ Q1  
 • BS 5852 Crib 5 with treatment •  
 AS/NZS 1530.3BS 5852 ignition  
 source 3



## Tapicerías

# Kvadrat Textiles / Telas Kvadrat

## Glow / Grade 9

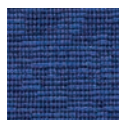
Composition / Composición  
 90% New wool, 310% Nylon  
 90% Lana nueva, 10% Nailon

Martindale test /  
 Resistencia a la abrasión  
 80.000 Cycles / Ciclos

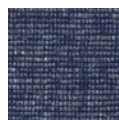
Certifications / Certificados  
 BS 5852 Crib 5 with treatment ●  
 BS 5852 ignition source 3 ● NF D  
 60 013 ● US Cal. Bull. 117-2013 ●  
 ÖNORM B1/ Q1



363



753



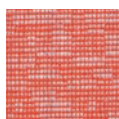
773



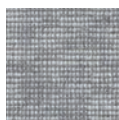
123



343



543



143



383



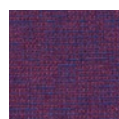
663



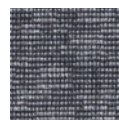
153



393



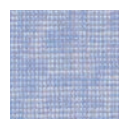
673



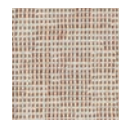
183



443



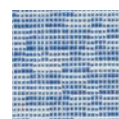
723



213



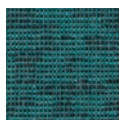
453



733



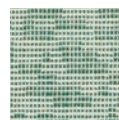
793



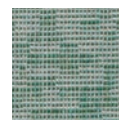
873



893



923



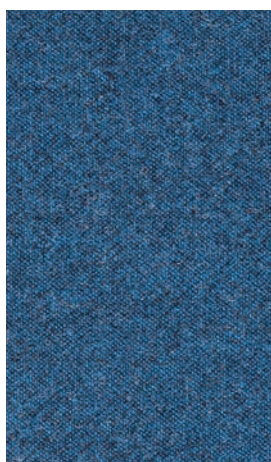
933

## Melange Nap / Grade 11

Composition / Composición  
 97% New wool, 3% Nylon  
 97% Lana nueva, 3% Nailon

Martindale test /  
 Resistencia a la abrasión  
 60.000 Cycles / Ciclos

Certifications / Certificados  
 BS 5852 ignition source 3 ● EN  
 1021-1/2 ● NF D 60 013 ● UNI  
 9175 1 ● IMUS Cal. Bull. 117-2013  
 ● BS 5852 part 1 ● BS 5852 Crib 5  
 with treatment



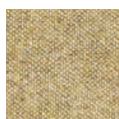
871



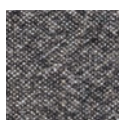
111



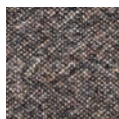
241



411



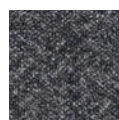
171



271



441



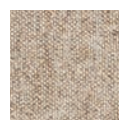
191



321



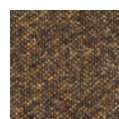
461



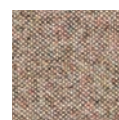
211



351



491



221



371



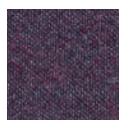
521



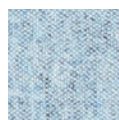
551



651



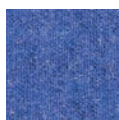
691



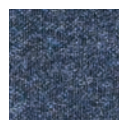
711



751



771



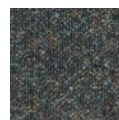
791



911



951



991

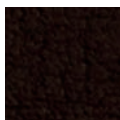
# Spradling Textiles / Telas Spradling

## Valencia / Grade 1

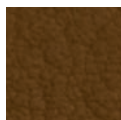
Composition / Composición  
 Vinyl / Urethane topcoat  
 Capa de vinilo / uretano

Martindale test /  
 Resistencia a la abrasión  
 100.000 Cycles / Ciclos

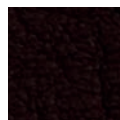
Certifications / Certificados  
 EU: EN 1021 Parte 1 y 2 ● ES: UNE 23.727-90 1R/M.2 ● FR: NF P 92-503/M2 ● DE: DIN 4102 B2 ● IT: UNI 9175 (1987) / UNI 9175/FA1 (1994) ● Classe 1:IM (UNO I EMME) ● AT: ÖNORM B 3825, Gruppe 1 - Schwerbrennbares Verhalten ● AT: ÖNORM A 3800 Teil 1, Qualmbildungsklasse Q1 - schwachqualmend ● IMO FTP 2010 Código MSC.307 (88) Parte 8 3.1 & 3.2 ● US: FMVSS 302 ● US: FAR 25/853 (MED) Marine Equipment Directive (en su versión en vigor) ● ECE R118.02 (replaces Directive 95/28/CE) Annexes 6, 7 & 8 ● EN 71-2:2006+A1:2007 - Seguridad del juguete - Parte 2: Inflamabilidad ● Selección de colores en calidad BS 5852 CRIB 5



**Praline**  
0001



**Cognac**  
0002



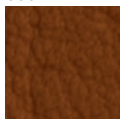
**Mocca**  
0020



**Buche**  
0033



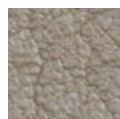
**Taupe**  
0034



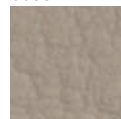
**Terracotta**  
0035



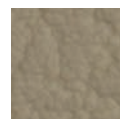
**Champagne**  
1001



**Ivory**  
1020



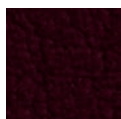
**Sisal**  
1048



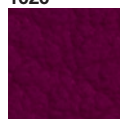
**Leinen**  
1049



**Beige**  
1050



**Merlot**  
2001



**Berry**  
2002



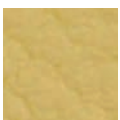
**Coral**  
2106



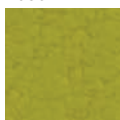
**Skylight**  
2107



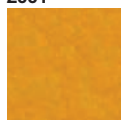
**Apfel**  
5041



**Citrus**  
2109



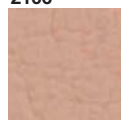
**Avocado**  
2110



**Squash**  
2111



**Tomato**  
2112



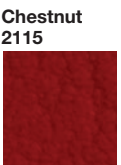
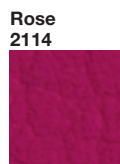
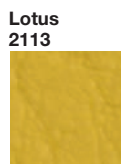
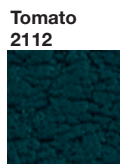
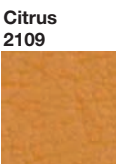
**Lotus**  
2113



**Rose**  
2114



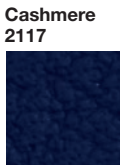
**Night**  
2108



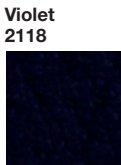
**Chestnut**  
2115



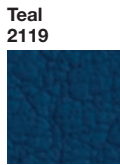
**Camel**  
2116



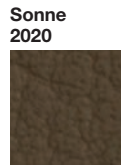
**Cashmere**  
2117



**Violet**  
2118



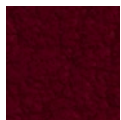
**Teal**  
2119



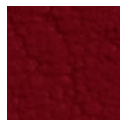
**Sonne**  
2020



**Pink**  
2021



**Port**  
2062



**Kirsche**  
2074



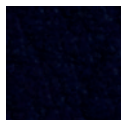
**Rot**  
2075



**Lavendel**  
3001



**Delft**  
3067



**Marine**  
3068



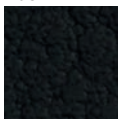
**Baltic**  
3069



**Mushroom**  
4001



**Laurel**  
4002



**Graphite**  
4003



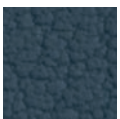
**Silver**  
4020



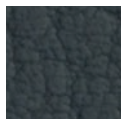
**Auster**  
4040



**Meteor**  
4041



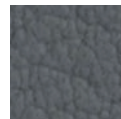
**Titan**  
4042



**Platin**  
4043



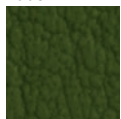
**War Grey**  
4044



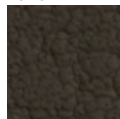
**Perle**  
4045



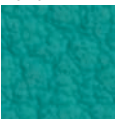
**Lightgrau**  
4052



**Olive**  
5001



**Moss**  
5002



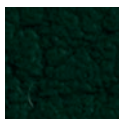
**Jade**  
5056



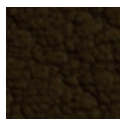
**Turkis**  
5057



**Petrol**  
5065



**Grön**  
5069



**Bronze**  
6002



**Nectarine**  
6003



**Safran**  
6012



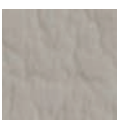
**Melone**  
6013



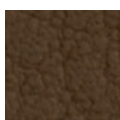
**Orange**  
6019



**Gold**  
6020



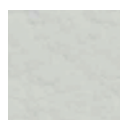
**Weiss**  
8032



**Sumatra**  
9001



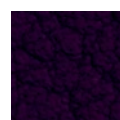
**Schwarz**  
9035



**Pure white**  
9607



**Pearlessence**  
8020



**Amethyst**  
7001

## Tapicerías

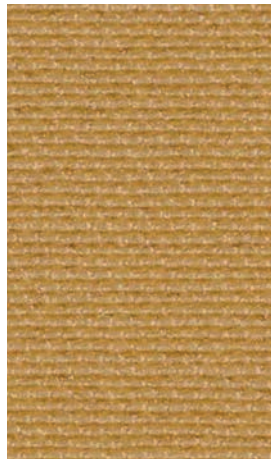
# Spradling Textiles / Telas Spradling

## Silvertex / Grade 2

Composition / Composición  
 Vinyl / Urethane topcoat  
 Capa de vinilo / uretano

Martindale test /  
 Resistencia a la abrasión  
 300.000 Cycles / Ciclos

Certifications / Certificados  
 EU: EN 1021 Parte 1 y 2 ● ES:  
 UNE 23.727-90 1R/M.2 ● FR: NF  
 P 92-503/M2 ● DE: DIN 4102 B2  
 ● IT: UNI 9175 (1987) / UNI 9175/  
 FA1 (1994) ● Classe 1.1M (UNO I  
 EMME) ● AT: ÖNORM B 3825,  
 Gruppe 1 - Schwerbrennbares  
 Verhalten ● AT: ÖNORM A 3800  
 Teil 1, Qualmbildungsklasse Q1 -  
 schwachqualmend ● IMO FTP 2010  
 Código MSC.307 (88) Parte 8 3.1  
 & 3.2 ● US: FMVSS 302 ● US: FAR  
 25/853  
 (MED) Marine Equipment Directive  
 (en su versión en vigor) ● ECE  
 R118.02 (replaces Directive 95/28/  
 CE) Annexes 6, 7 & 8 ● EN 71-  
 2:2006+A1:2007 - Seguridad del  
 juguete - Parte 2: Inflamabilidad ●  
 Selección de colores  
 en calidad BS 5852 CRIB 5



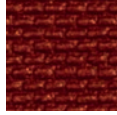
**Camel**  
2105



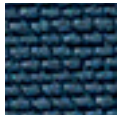
**Avocado**  
2092



**Lotus**  
2099



**Sunkist**  
2012



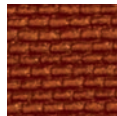
**Jet**  
3068



**Shitake**  
4012



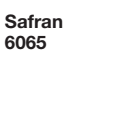
**Mandarin**  
6061



**Melon**  
6062



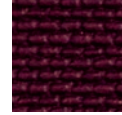
**Safran**  
6065



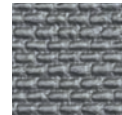
**Squash**  
2093



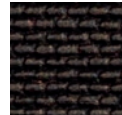
**Teal**  
2100



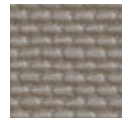
**Raspberry**  
2016



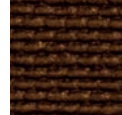
**Plata**  
4001



**Meteor**  
4024



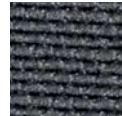
**Macadamia**  
0001



**Luggage**  
0073



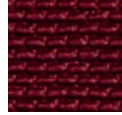
**Champagne**  
1078



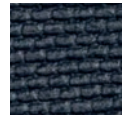
**Petrol**  
2094



**Aluminium**  
2101



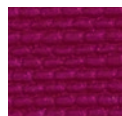
**Wine**  
2064



**Storm**  
4002



**Pistacho**  
5008



**Magenta**  
7002



**Sandstone**  
0002



**Beige**  
1010



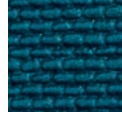
**Cobre**  
2003



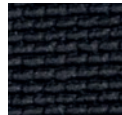
**Grenadine**  
2095



**Coral**  
2102



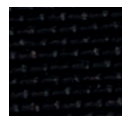
**Turquoise**  
3001



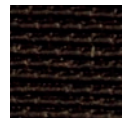
**Graphite**  
4003



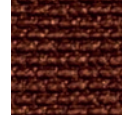
**Sage**  
5009



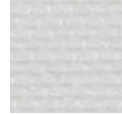
**Black**  
9001



**Mocca**  
0005



**Umber**  
1014



**White**  
2089



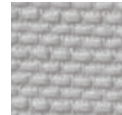
**Tomato**  
2096



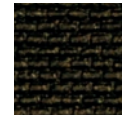
**Skylight**  
2103



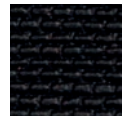
**Sapphire**  
3007



**Ice**  
4004



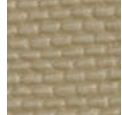
**Bottle**  
5010



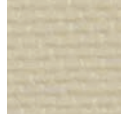
**Carbon**  
9002



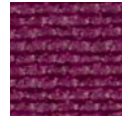
**Taupe**  
0009



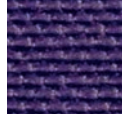
**Sisal**  
1051



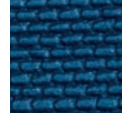
**Icecream**  
2090



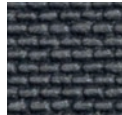
**Orchid**  
2097



**Violet**  
2104



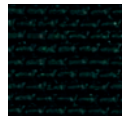
**Baltic**  
3066



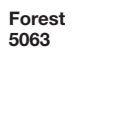
**Titanium**  
4010



**Celery**  
5019



**Forest**  
5063



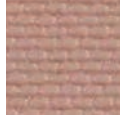
**Orange**  
0013



**Cream**  
1077



**Citrus**  
2091



**Rose**  
2098



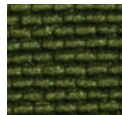
**Red**  
2011



**Delft**  
3067



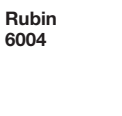
**Sterling**  
4011



**Basil**  
5020



**Rubin**  
6004



## Spradling Textiles / Telas Spradling

### Maglia / Grade 3

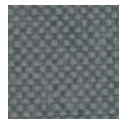
Composition / Composición  
Vinyl / Urethane topcoat  
Capa de vinilo / uretano

Martindale test /  
Resistencia a la abrasión  
>100.000 Cycles / Ciclos

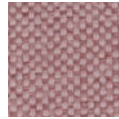
Certifications / Certificados  
EU: EN 1021 Parte 1 y 2 ● ES:  
UNE 23.727-90 1R/M.2 ● FR: NF  
P 92-503/M2 ● DE: DIN 4102 B2  
● IT: UNI 9175 (1987) / UNI 9175/  
FA1 (1994) Classe 1.IM (UNO I  
EMME) ● AT: ÖNORM B 3825,  
Gruppe 1 - Schwerbrennbare  
Verhalten ● AT: ÖNORM A 3800  
Teil 1, Qualmbildungsklasse Q1 -  
schwachqualmend ● IMO FTP 2010  
Código MSC.307 (88) Parte 8 3.1  
& 3.2 ● US: FMVSS 302 ● US: FAR  
25/853 ● (MED) Marine Equipment  
Directive (en su versión en vigor) ●  
ECE R118.02 (replaces Directive  
95/28/CE) Annexes 6, 7 & 8 ● EN  
71-2:2006+A1:2007 - Seguridad  
del juguete - Parte 2: Inflamabilidad



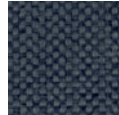
**Urban  
8056**



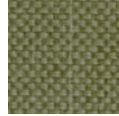
**Armony  
0031**



**Blossom  
4203**



**Midnight  
5450**



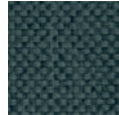
**Sage  
0406**



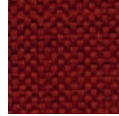
**Dovetail  
1702**



**Uyumi  
5001**



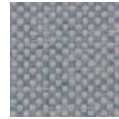
**Greenland  
6443**



**Mars  
4227**



**Earth  
3616**



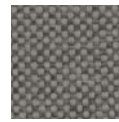
**Serenity  
2420**



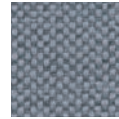
**Sky  
2003**



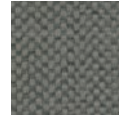
**Truffle  
4537**



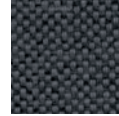
**Granite  
7026**



**Breeze  
0003**



**Safari  
8022**



**Thunder  
6016**



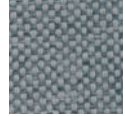
**Ginger  
6025**



**Indigo  
5559**



**Primrose  
2000**



**Alaska  
4008**

### Dolce / Grade 4

Composition / Composición  
100% Rayon  
100% Rayón

Martindale test /  
Resistencia a la abrasión  
>300.000 Cycles / Ciclos

Certifications / Certificados  
EU: EN 1021 Parte 1 y 2 ● IMO FTP  
2010 Código MSC.307 (88) Parte 8  
3.1 & 3.2 ● US: FMVSS 302



**Tangelo  
6718**



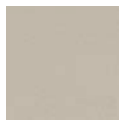
**White  
6701**



**Latte  
6706**



**Russet  
6711**



**Ivory  
6702**



**Cumin  
6707**



**Mocha  
6712**



**Ecru  
6703**



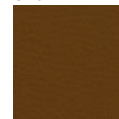
**Mushroom  
6708**



**Chocolate  
6713**



**Dune  
6704**



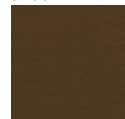
**Camel  
6709**



**Burgundy  
6714**



**Sand  
6705**



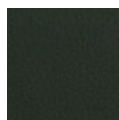
**Lion  
6710**



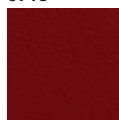
**Fog  
6715**



**Bramble  
6716**



**Moss  
6717**



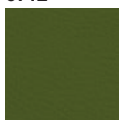
**Poppy  
6719**



**Fuchsia  
6720**



**Citron  
6721**



**Grass  
6722**



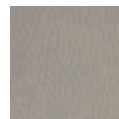
**Peacock  
6723**



**Jet  
6724**



**Indigo  
6725**



**Artesian  
DL 6726**



**Meteor  
6727**



**Black  
6728**

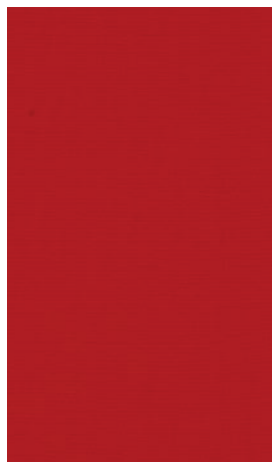
## Tapicerías

# Sunbrella Textiles / Telas Sunbrella

## Solid & Stripes / Grade 2

Composition / Composición  
100% acrílico teñido en masa  
100% acrylic dyed mass

Martindale test /  
Resistencia a la abrasión  
20.000 Cycles / Ciclos



**Logo red**  
5477



**Blue chine**  
3793



**Paprika**  
3939



**Argile**  
3960



**Mint**  
3967



**Tuscany**  
5417



**Pink**  
3905



**Polar blue**  
3940



**Azure**  
3961



**Pepper**  
3968



**Mineral blue**  
5420



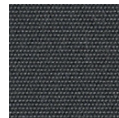
**Mink brown**  
3127



**Paris red**  
3728



**Lead chine**  
3756



**Carbon**  
3906



**Adriatic**  
3941



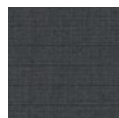
**Peach**  
3962



**Pumpkin**  
3969



**Antique beige**  
5422



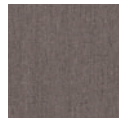
**Charcoal**  
3705



**Taupe**  
3729



**Flanelle**  
3757



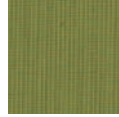
**Taupe chine**  
3907



**Blue storm**  
3942



**Eggshell**  
3963



**Lichen**  
3970



**Burgundy**  
5436



**Shingles**  
3706



**Ardoise**  
3737



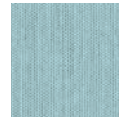
**Sooty**  
3758



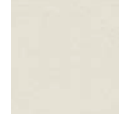
**Lime**  
3936



**Nacre**  
3943



**Curacao**  
3964



**Natural**  
5404



**Navy blue**  
5439



**Riviera blue**  
3717



**Macao**  
3738



**Line**  
3780



**Lemon**  
3937



**Charron**  
3944



**Blush**  
3965



**Black**  
5408



**Canvas**  
5453



**True blue**  
5499



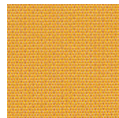
**Plum**  
3718



**Silver grey**  
3741



**Dark smoke**  
3792



**Mimosa**  
3938



**Granny**  
3945



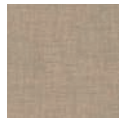
**Marble**  
3966



**Aruba**  
5416



**Heather beige**  
5476



**Arbor pebble**  
48009



## Sunbrella Textiles / Telas Sunbrella

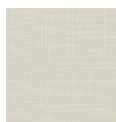
### Natte / Grade 3

Composition / Composición  
 100% Sunbrella solution dyed  
 acrylic  
 Solución Sunbrella 100% teñida  
 acrílica

Martindale test /  
 Resistencia a la abrasión  
 25.000 Cycles / Ciclos



**Carbon sky**  
 10064



**Nature**  
 10014



**White**  
 10020



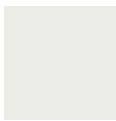
**Canvas**  
 10021



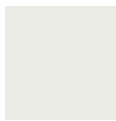
**Grey chine**  
 10022



**Frosty chine**  
 10025



**Heather beige**  
 10026



**Heather grey**  
 10027



**Heather beige**  
 10028



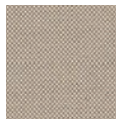
**Heather grey**  
 10029



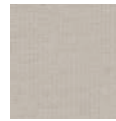
**Sooty**  
 10030



**Nature grey**  
 10040



**Heathe**  
 10150



**Linen**  
 10151



**Graumel**  
 10152



**Flanelle**  
 10153



**Storm**  
 10154



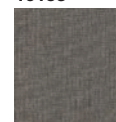
**Taupe**  
 10155



**Dark taupe**  
 10059



**Charcoal chine**  
 10063



**Carbon beige**  
 10065

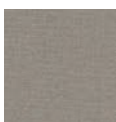
### Heritage / Grade 4

Composition / Composición  
 50% Recycled acrylic, 47% acrylic,  
 3% PE  
 50% acrílico reciclado, 47%  
 acrílico, 3% PE

Martindale test /  
 Resistencia a la abrasión  
 25.000 Cycles / Ciclos



**Denim**  
 18010



**Ash**  
 18001



**Garnet**  
 18003



**Granite**  
 18004



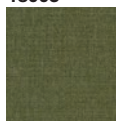
**Papyrus**  
 18006



**Pumpkin**  
 18007



**Char**  
 18009



**Leaf**  
 18011



**Moss**  
 18012

## Tapicerías

## Sunbrella Textiles / Telas Sunbrella

### Savane / Grade 4

Composition / Composición  
100% Sunbrella solution dyed  
acrylic  
Solución Sunbrella 100% teñida  
acrílica

Martindale test /  
Resistencia a la abrasión  
35.000 Cycles / Ciclos



**Coconut**  
233



**Grey**  
234



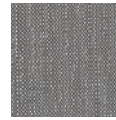
**Silver**  
239



**White**  
235



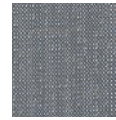
**Granite**  
240



**Zinc**  
236



**Flanelle**  
241



**Storm**  
237



**Canvas**  
238

### Chartres / Grade 6

Composition / Composición  
100% Sunbrella solution dyed  
acrylic  
Solución Sunbrella 100% teñida  
acrílica

Martindale test /  
Resistencia a la abrasión  
35.000 Cycles / Ciclos



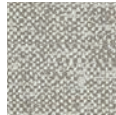
**Pearl**  
193



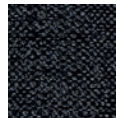
**Bronze**  
181



**Antique**  
186



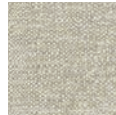
**Grey**  
191



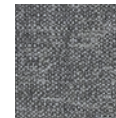
**Sooty**  
182



**Glacier**  
187



**Lichen**  
192



**Flanelle**  
183



**Mint**  
188



**Silver**  
194



**Rose**  
184



**Heather**  
189



**Mineral**  
185



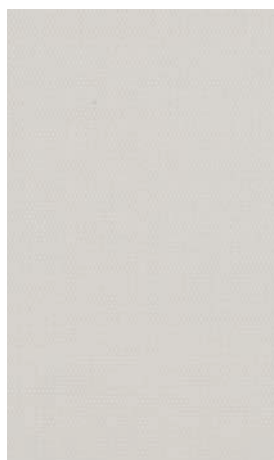
**Gold**  
190

## Sunbrella Textiles / Telas Sunbrella

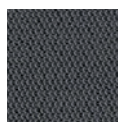
Lopi / Grade 8

Composition / Composición  
100% Sunbrella solution dyed  
acrylic  
Solución Sunbrella 100% teñida  
acrílica

Martindale test /  
Resistencia a la abrasión  
80.000 Cycles / Ciclos



**Snow**  
033



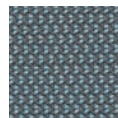
**Shadow**  
013



**Marble**  
018



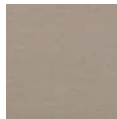
**Blush**  
023



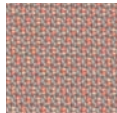
**Cloud**  
028



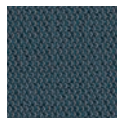
**Coconut**  
014



**Sand**  
019



**Peach**  
024



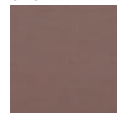
**Storm**  
029



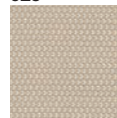
**Silver**  
015



**Vanilla**  
020



**Coral**  
025



**Antique**  
034



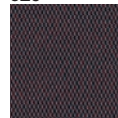
**Hemp**  
016



**Lime**  
021



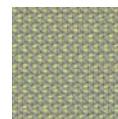
**Glacier**  
026



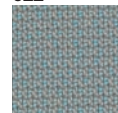
**Plum**  
035



**Charcoal**  
017



**Pistache**  
022



**Steel**  
027